

**SESSION 215**

**TITLE: EXPLORING THE LIMITATIONS OF SIA IN ACHIEVING SUSTAINABLE DEVELOPMENT**

# STRENGTHENING SOCIAL IMPACT ASSESSMENT AS A TOOL TO FACILITATE JUST TRANSFORMATION IN MALAYSIA



***TPr Herlina Ab Aziz***

***PRESIDENT***

***MALAYSIAN ASSOCIATION OF SOCIAL IMPACT ASSESSMENT***

***Malaysia***

***<https://msiamy.org>***

***[siamalaysia@gmail.com](mailto:siamalaysia@gmail.com)***





# CONTENTS:

**1** *The Introduction to Malaysian Social Impact Assessment Association (MSIA)*

**2** *Key Principles of Just Transformation*

**3** *Redefining Challenges of Social Impact Assessments (SIA) in Malaysia and summary Actions to Strengthen SIA Tools and Practices to Facilitate Just Transformation*



## BACKGROUND OF MALAYSIAN ASSOCIATION OF SOCIAL IMPACT ASSESSMENT (MSIA)

The Malaysian Association of Social Impact Assessment (MSIA) was established under the Registrar of Societies Malaysia on 2005.

MSIA is an association of multi-disciplinary professionals, open to all Malaysians from various fields including:

- Town Planners
- Socio-economists
- Environmentalists
- Engineers
- Sociologist
- Psychotherapists
- Legislators
- Academicians
- Researchers

### OUR VISION

**“SAFEGUARDING  
THE WELLBEING OF  
OUR COMMUNITY”**



### OUR MISSION



***To strengthen the practice of social impact assessment in policy, programmes and projects.***



<https://msiamy.org/members/>



## Equity

*Fair distribution of costs and benefits particularly for marginalized or vulnerable communities.*



## Participation

*Engaging diverse stakeholders in decision-making processes to ensure their voices are heard and their perspectives are considered*



## Accountability & Transparency

*Holding the construction industry and decision-makers responsible for the consequences of their actions and ensuring mechanisms for transparency and oversight in process and outcomes.*



## Sustainability

*Promoting long-term sustainability - interconnections between social economic and environmental factors*



## Recognition of Diversity

*Acknowledging the diversity of perspectives knowledge systems and values and incorporating these into decision-making processes.*



## Redress

*Providing mechanisms for addressing past injustices and remedying inequalities*

# TYPE OF SOCIAL IMPACT ASSESSMENTS IN MALAYSIA



**FINANCIER/ DONOR  
REQUIREMENT**

**CERTIFICATION  
REQUIREMENT**

**STATUTORY  
REQUIREMENT**

SIA to meet requirements  
of financial institutions

SIA for certification  
schemes such as Malaysian  
Sustainable Palm Oil, RSPO  
& FSC

**SIA for Project Devt**

**Under the purview of the  
Town & Country Planning  
Act**

SIA in feasibility  
assessment/studies

**SEIA in EIA**

SIA in EIA (Environmental  
Quality Act)

SIA in EIA (Natural Resources  
& Environment Ordinance)  
**SARAWAK**

SIA for programmes or  
policies

SIA in EIA (Environment  
Protection Enactment) **SABAH**

**VOLUNTARY**

*For Sustainability Goal,  
ESG etc.*

**SIA**

# REDEFINING CHALLENGES & ACTIONS TO STRENGTHEN SIA PRACTICES



## **Enhancing SIA Mandates: Addressing Recognition Gaps**

*SIA is currently mandated only at the development project level, lacking recognition and mandatory status at the feasibility study and land approval processing levels.*



## **Raising Awareness: Overcoming SIA Perception Barriers**

*A lack of awareness regarding social safeguards among stakeholders in the development industry, combined with a disproportionate focus on economic development, results in SIA being perceived as a barrier and a source of delays in development approval procedures.*



## **Improving SIA Capabilities: Enhancing Methodology and Expertise**

*The current capabilities of SIA assessors and consultants are inadequate, necessitating the enhancement of SIA methodology and approach to provide better inputs for decision-making processes.*

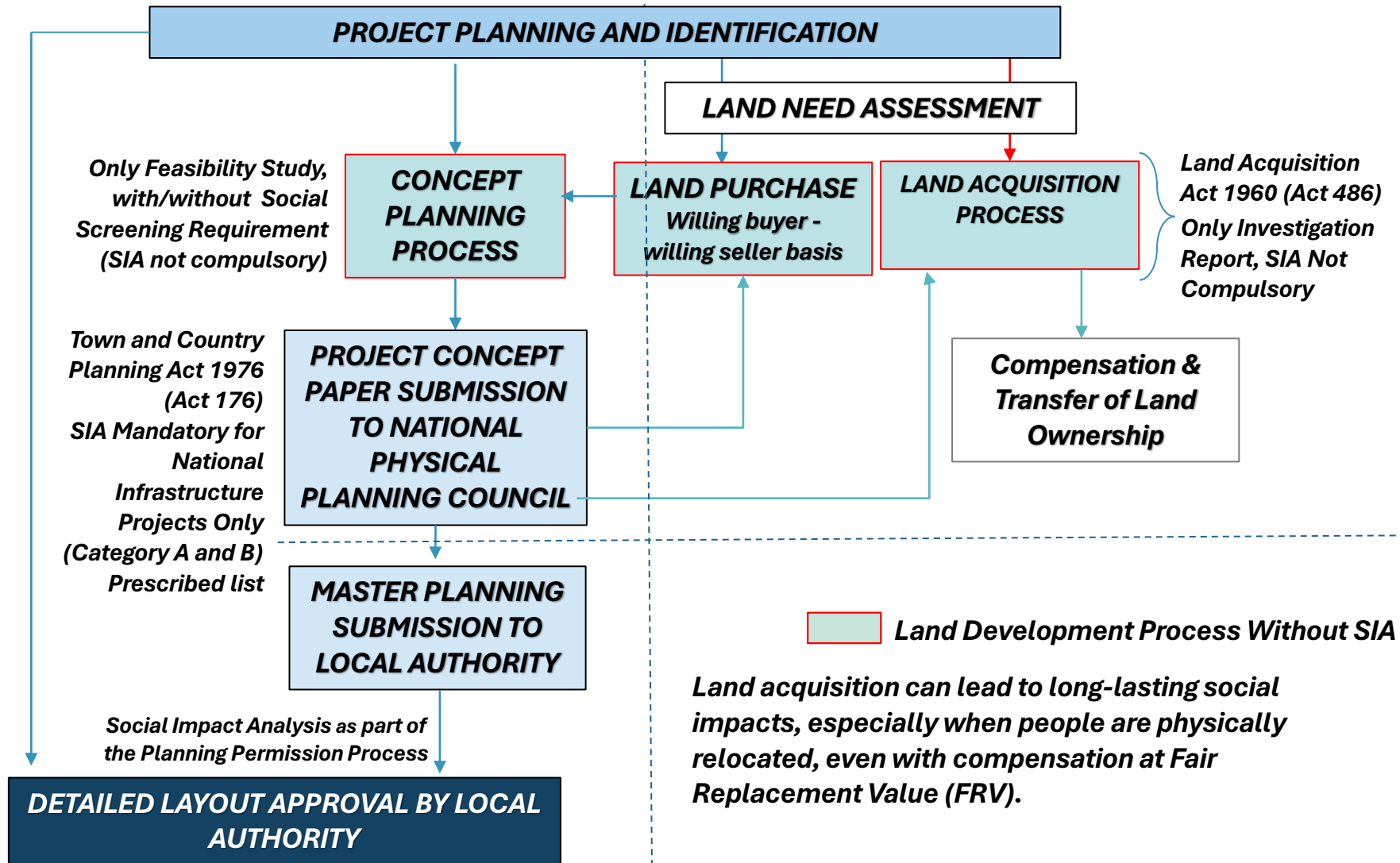


## **Strengthening Legal Frameworks for Effective SIA Implementation**

*The existing framework for the implementation and monitoring of SIA is inadequate, resulting in challenges in fully implementing mitigation actions.*



# SIA FOR EARLY DECISION MAKING FOR DEVELOPMENT PROJECTS





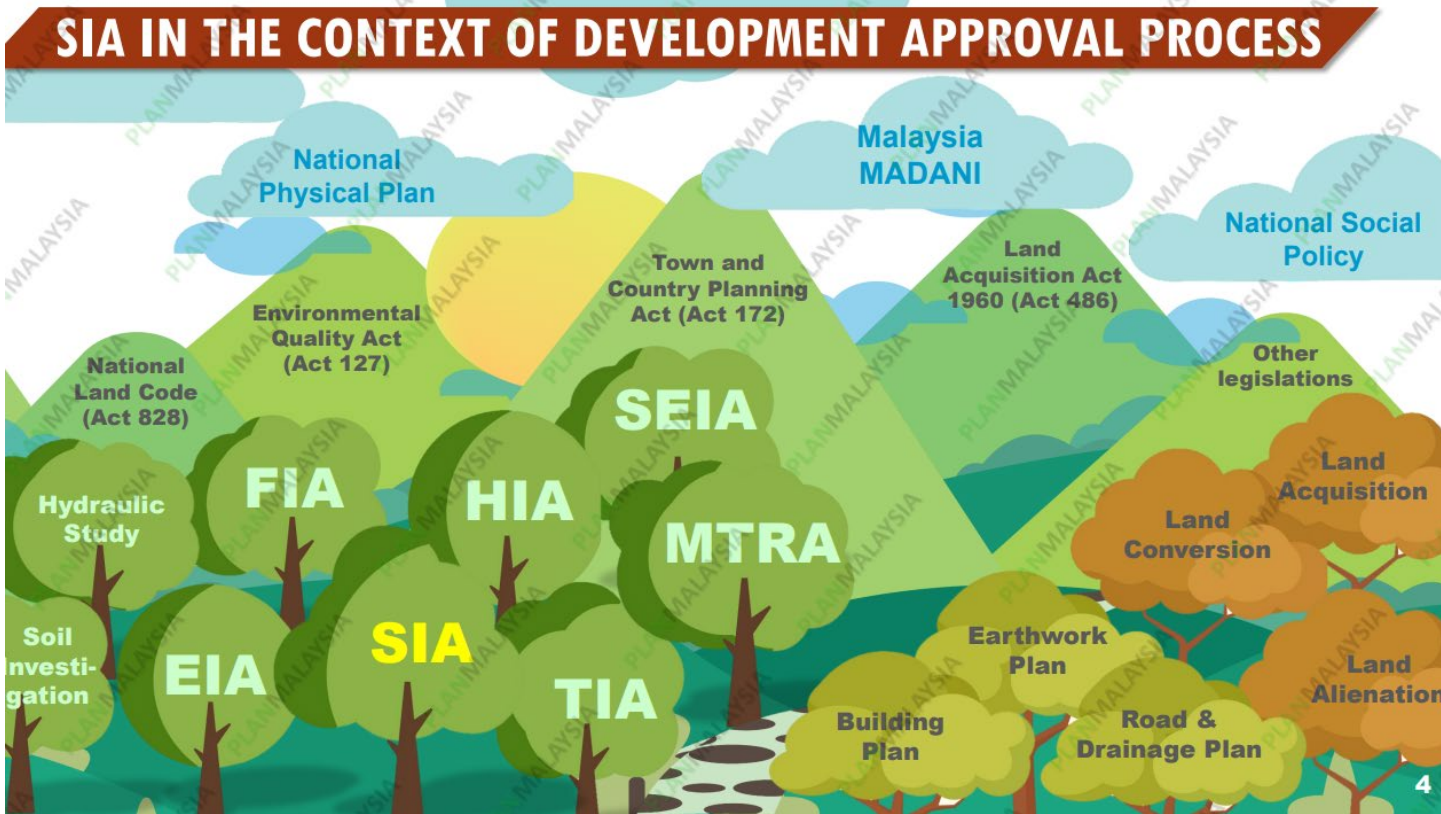
# STRENGTHENING INSTITUTIONAL FRAMEWORK

## Boosting Investor Confidence in Malaysia by Streamlining Impact Assessment Processes for Project Approvals



Ease Of Doing Business

*The Malaysian government will explore streamlining and enhancing the efficiency of various impact assessment processes in Malaysia. This involves simplifying project approval procedures while maintaining rigorous assessment standards and environmental/social safeguards.*







# INFORMED DECISION MAKING FOR DEVELOPMENT PROJECTS



SIA FUNCTION

## PROJECT PROPONENT



*SIA is a project planning tool for the Project Proponent.*

*Analysis, scientific studies & predictions from the SIA should lead to better project planning in terms of social aspects, reduce cost to the society, minimise business risks and comply with all regulations.*



## GOVERNMENT



*SIA report is a decision-making tool for the Government*

*The SIA reports should provide sufficient and reliable information about the impacts and mitigation measures to enable the Government to make informed decisions, in line with the national's policies and aspirations.*

- Business plan
- Return on investment
- Shareholders' mandate

- National policies
- Laws & regulations
- E&S governance

- National vision
- Law & regulations
- Public interest

- National priorities
- Policies
- International obligations

Project Proponent		
Engineers	Consultants	Planners
Supplier	Bankers	Contractor
Lawyers	Accountants	Salesman

Government		
Civil service		
Panel of experts	Public budget	Courts
Licensing	Incentives	

**3** criteria need to be fulfilled :

The project must be in line with national policies & laws

Benefits to society surpass costs to society

Adverse impacts must be reduced to acceptable levels

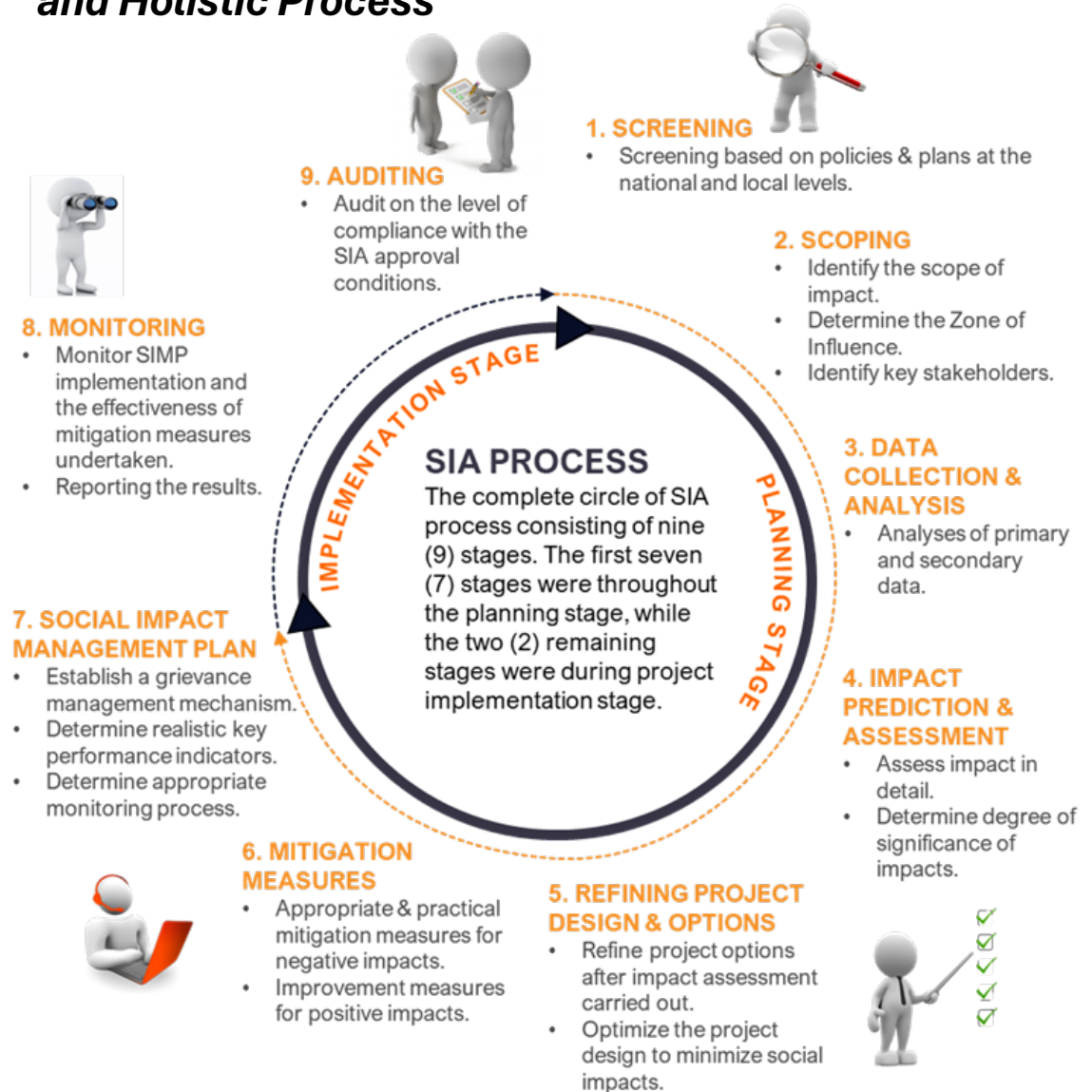
# REDEFINING CHALLENGES

Recognizing SIA as an ongoing process enables organizations to be flexible, responsive, and adaptive.

This approach optimizes expenses, promotes stakeholder engagement, and ensures long-term sustainability.

It's a comprehensive, iterative process that considers social impacts at every stage of development.

## Challenges in Embracing SIA as a Key Planning Tool and Holistic Process





# SIA AND SOCIAL SAFEGUARDS PROMOTION IN CONFERENCES ATTENDED BY CONSTRUCTION INDUSTRIES

## SIA Symposium and Module 1 Competency Courses involving property developers

## LEADING ESG IN CONSTRUCTION CONFERENCE International Construction Week (ICW) 2023.



### MALAYSIA URBAN FORUM SIA and Social Inclusion in Cities



## SIMPOSIUM PENILAIAN IMPAK SOSIAL BAGI PROJEK PEMBANGUNAN SIA 2023

Ucapan Perasmian oleh: YBrs. TPr Dr. Alias bin Rameli, Ketua Pengarah Perancangan Bandar dan Desa

### KERTAS KERJA SIMPOSIUM SIA 2023

- KERTAS KERJA 1:** SIA DALAM KONTEKS PERUBAHAN iklim. TPr Zahirah bin Dugi, Pengarah, Bahagian Perancangan dan Kemasukan, Perancangan Bandar dan Desa, PLANNMalaysia.
- KERTAS KERJA 2:** PENGENALAN KERTAS PENILAIAN IMPAK SOSIAL DAN BANGUNAN PELAKSANAAN (SPSIA) oleh TPr Dr. Chae Fong, Pengarah, Bahagian Perancangan dan Kemasukan, PLANNMalaysia.
- KERTAS KERJA 3:** AMALAN TERBAIK PENERAPAN LAPORAN PENILAIAN IMPAK SOSIAL oleh TPr Nurul Huda, Ketua, Jaja Unit SIA, PLANNMalaysia.
- KERTAS KERJA 4:** KOTISED PERUBAHAN ISROTAR SEBAGAI PENTIA DAN PENILAI LAPORAN SIA oleh Dr. Mubtashir Hussain, Ketua Timbalan Pengarah Bahagian Penyelidikan dan Penyelidikan, PLANNMalaysia.

### SESI PERBINCANGAN PANEL 1: PELAKSANAAN SIA UNTUK PROJEK INFRASTRUKTUR UTAMA

- Moderator: TPr Herlina Ab Aziz, President, Malaysian Association of Social Impact Assessment (MSIA)
- Panel 1: Mr. Carlos T Perez-Brito, Senior Social Specialist, World Bank
- Panel 2: Enck Mohd Nizam Daut, Timbalan Pengarah Projek, Malaysia Rail Link Sdn. Bhd (MRL)
- Panel 3: Dr. Mohd Shahwaib bin Haji Othman, Committee Member, Malaysian Association of Social Impact Assessment (MSIA)

### SESI PERBINCANGAN PANEL 2: PENYEDIAAN SIA KATEGORI B

- Moderator: TPr Saiful Azman Abdul Rashid, Council Member, Malaysian Institute of Planner (MIP)
- Panelist 1: TPr Rozita bt Hamit, Pengarah, PLANNMalaysia Pulau Pinang
- Panelist 2: Dr. Azizlan Aziz, Pengarah, DF Planning PLT
- Panelist 3: Enck Zawawi Wahab, Head of Subsidiary, Property Division Bina Darul Aman Berhad (BBB)

Anjuran: PERSATUAN DECAWAY PERANCANG BANDAR DAN DESA MALAYSIA

Dengan Kerjasama: PLANMalaysia, MALAYSIA MADANI, MSIA

Disokong Oleh: MSIA





# SIA REVIEW PANEL MEETINGS FOR APPROVAL OF SIA

## Accountability & Transparency

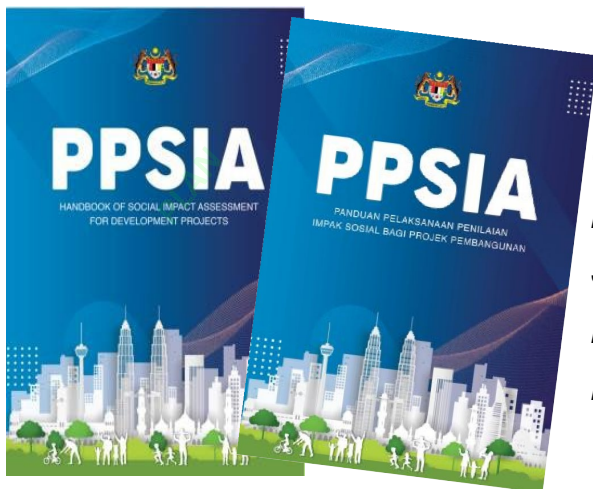
MSIA as one of the Panelists at PLANMalaysia HQ dan PLANMalaysia (State) in assessing SIA reports submitted by applicants for approval





## STRENGTHENING SIA METHODOLOGY

To enhance the credibility and reliability of SIA findings, prioritize achieving sustainable, equitable, and inclusive development outcomes in decision-making processes



Guidance for the Implementation of SIA for Development Projects (2023)

NEW UPDATE

### SIA Category A

Projects of national significance - require

\*NPPC: advice from NPPC\*  
National Physical Planning Council chaired by the Prime Minister

NEW UPDATE

### SIA Category B

Projects that has significant social impacts at state level

Introduction

SIA by Category

Public Engagement in SIA study

SIA Process

NEW UPDATE

Screening and Scoping

NEW UPDATE

Data Collection

NEW UPDATE

Evaluation Impacts

NEW UPDATE

Mitigation Measures

NEW UPDATE

Social Impacts Management Plan

Evaluation of SIA Report

NEW UPDATE

Monitoring and Auditing

NEW UPDATE

Qualified Person

NEW UPDATE

Appendixes



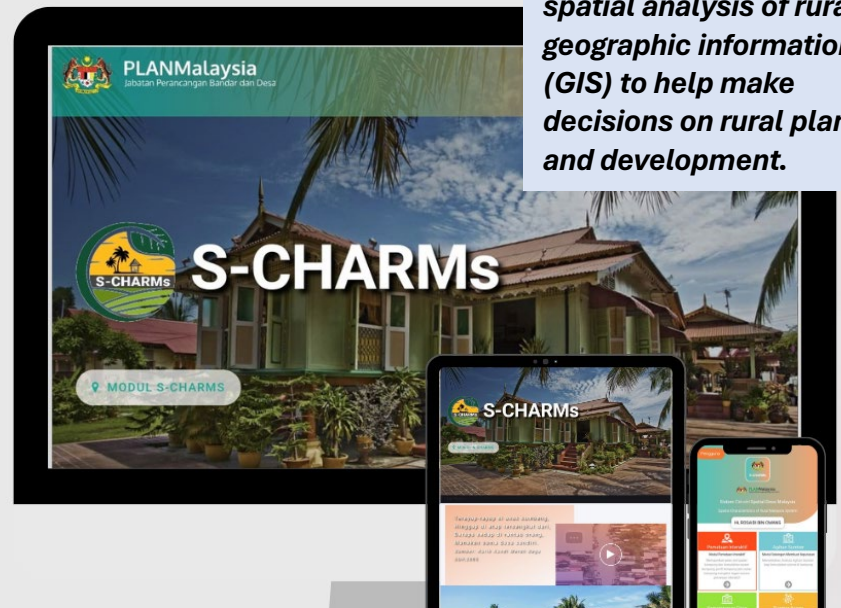
## Actions needed include:

1. **Deploying tech-driven methods such as remote sensing and digital surveys in rural areas for precise and prompt data collection.**
2. **Establishing uniform protocols for data gathering to maintain consistency across different SIAs.**
3. **Maintaining a centralized database to store and distribute SIA-related data for stakeholders' easy access.**
4. **Collaborating with local communities, NGOs, and academia to broaden data collection and ensure comprehensive coverage.**
5. **Regularly reviewing data collection processes to enhance quality and identify areas for improvement.**

# S-CHARMs

## SISTEM CIRI-CIRI SPATIAL DESA MALAYSIA SPATIAL CHARACTERISTICS OF RURAL MALAYSIA SYSTEM

*A database system and spatial analysis of rural geographic information (GIS) to help make decisions on rural planning and development.*

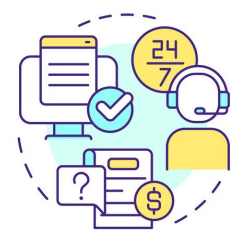


## SIA RAPID APPRAISAL DECISION SUPPORT SYSTEM (SIRA)

- Industry Matching Program 2024  
UniSZA-MSIA-PEERS



# REDEFINING CHALLENGES *Big Data Initiatives*



Ease Of Doing Business



Home About Us Services Contact Us



## Malaysia Geospatial Data Sharing Platform

Provides Free Fundamental Geospatial Data for Malaysia Government Agencies, Public University Students and Researchers

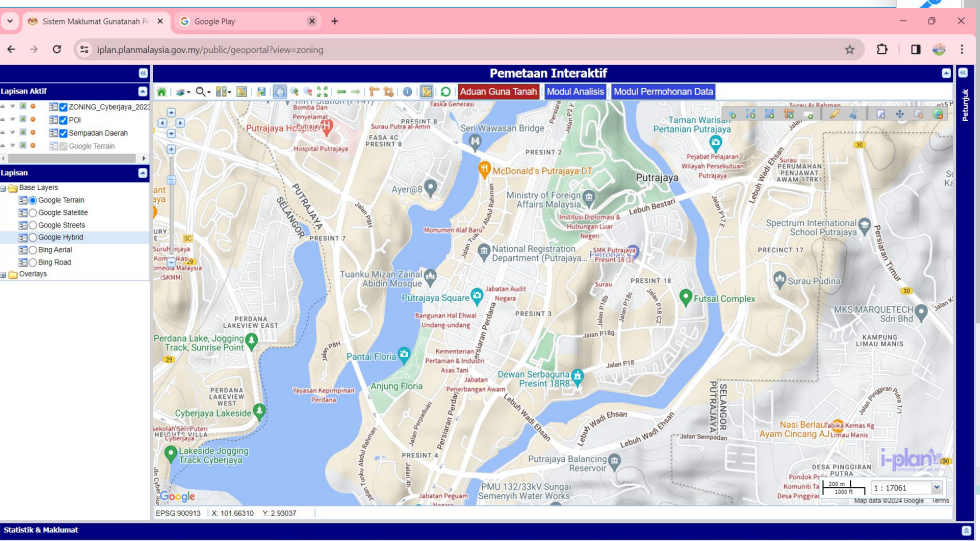
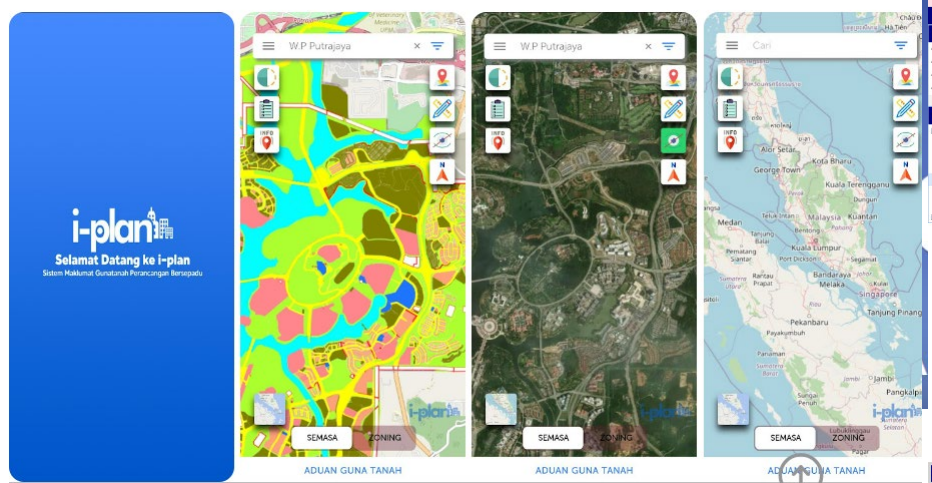


[User Manual](#) [Kamus Kategori Guna Tanah](#) [Kakitangan](#)

<https://newss.statistics.gov.my/newss-portalx/ep/epLogin.seam>



Home Dashboard About I-Plan Services Data Geospasial Application Frequently Asked Questions



<https://www.mygeoportal.gov.my/en/>

<https://iplan.planmalaysia.gov.my/>





**Improving SIA Capabilities:  
Enhancing Methodology and  
Expertise**

# THE CAPACITY BUILDING ACTIVITIES & COMPETENCY COURSES

3 levels of training i.e Beginner, Intermediate and Advanced level

## SIA Professionals Accreditations by PLANMalaysia



**PLANMalaysia**  
Perancangan Melalui Kejuruteraan  
Perancang Beyond Conventional

### PERAKUAN PENDAFTARAN

INI ADALAH UNTUK MEMPERAKUI BAHAWA

Nama: **TPr Herlina binti Ab Aziz**

No. Kad Pengenalan: **660602-04-5286**

No. Siri Pendaftaran: **SIA 018 / 2022**

Alamat: **MALAYSIAN ASSOCIATION OF SOCIAL IMPACT ASSESSMENT  
D2-06-11 TAMARIND SQUARE,  
63000 CYBERJAYA  
MALAYSIA**

yang telah mematuhi kehendak-kehendak pendaftaran untuk didaftarkan sebagai  
**PENILAI dan PENYEDIA BERDAFTAR** Laporan SIA bagi projek pembangunan.

Perakuan Pendaftaran ini tamat tempoh pada **31 Disember 2023**

Tarikh dikeluarkan: **JUN 2022**



  
**DATUK M NOOR RAZMAN BIN TAIB**  
Ketua Setiausaha  
Kementerian Perumahan dan Kerajaan Tempatan



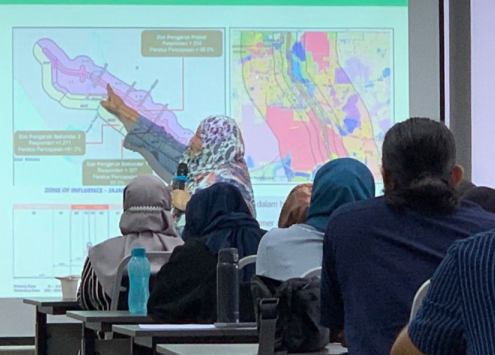




# PHYSICAL WORKSHOPS / SIA COURSES

## Capacity Building Programs for SIA Professionals

PENENTUAN ZON PENGARUH (ZOI)



TOPIK

PENENTUAN ZON PENGARUH IMPAK (ZOI) DALAM PENYEDIAAN SIA BERKUALITI

20<sup>th</sup> OCT 2022

Khamis  
3:00 – 4:30 PM

Penceramah

TPr. Herlina Ab. Aziz  
Presiden MSIA

Moderator

TPr. Dr. Gobi Krishna  
Exco MSIA

Register  
NOW!

## WORKSHOP ON SOCIAL IMPACT ASSESSMENT (SIA) METHODOLOGY & PRACTICES



RM 650 MSIA member  
RM 760 Non-MSIA member

**40** LIMITED TO  
PARTICIPANTS

Date: 19-20<sup>th</sup> February 2024



RAIA Hotel & Convention  
Centre, Kuching, Sarawak



- Interactive Learning
- Industry-Relevant Content
- Expert Facilitators
- Networking Opportunities

### SIA METHODOLOGY



#### Course Facilitator 1

**DR. KUPPUSAMY SINGARAVELLOO**  
MSIA Exco  
MSIA Professional Member A010  
PLANMalaysia Registered SIA Assessor  
and Practitioner SIA 021/2022



#### Course Facilitator 2

**TPR DR. GOBI KRISHNA SINNIAH**  
MSIA Professional Member A013  
PLANMalaysia Registered SIA Assessor  
and Practitioner SIA 023/2022



#### Course Facilitator 3

**HJ SAPHERI BIN ROSLI**  
MSIA Ordinary Member B292  
Manager, Corporate Affairs Division  
Land Custody and Development  
Authority Sarawak

#### ABOUT THE COURSE

This intensive course delves directly at providing an in-depth understanding of underlying methodology concepts for SIA professionals and practitioners. It also includes case studies and best practices in methodology.

#### CONTENTS

- Introduction to SIA in Sarawak
- Methodological Framework for SIA
- Principles in Methodology
- Screening, Scoping and ZOI
- Sampling and techniques
- Baseline Data Collection
- Implications of Methodology
- Impact Imputations
- SIA for Plantation
- Case Studies





# MALAYSIA ASSOCIATION OF SOCIAL IMPACT ASSESSMENT

## Webinars/Talks 2019-2024



### # Socio-Economic

### # Land Acquisition

### # Social Impact Management Plan

## SIA AND SOCIO-ECONOMIC ASSESSMENT

9th October 2021  
10:00 AM Kuala Lumpur

Meeting ID: 823 4574 1255  
Passcode: 900152

**MODERATOR**  
Dr. Mohd Shahwahid Hj Othman  
Exco MSIA

**SHARING IDEAS WITH THE WORLD**  
A Casual Forum by the Malaysian Association of Social Impact Assessment to encourage discussion on various topics related to social impact assessment.

**SPEAKERS**  
Dr. Awang Noor A. Ghani  
President of Malaysian Environmental Economics Assoc. Executive Committee Member, Economy and Environment Partnership for Southeast Asia (EPEEA)

Dr. Kamaruzaman Hj Ujang  
IKU, Socio-economic Research Consultant  
AGV Sustainability Sdn Bhd

## LAND ACQUISITION CRITICAL ISSUES AND THE ROLE OF SIA

24th AUG 2023 THURSDAY 2.30 PM - 4.00 PM

**Meeting ID:** 893 2385 7931  
**Passcode:** 096002

**LAND ACQUISITION?**

**Speaker**  
Professor Dr Haji Ismail Omar  
President, Pertubuhan Profesional Tanah Malaysia@PERTAMA  
Honorary Professor  
Infrastructure University Kuala Lumpur.

**Moderator**  
TPr Dr. Gobi Krishna Sinniah  
Chairman of Training Committee  
MSIA No A013

Webinar registration fee of RM 20. Please make payment to "Pertubuhan Penilaian Impak Sosial Malaysia" via on-line transfer to Maybank Account 562151007162. Email proof of payment to [susmalaysia@gmail.com](mailto:susmalaysia@gmail.com) and indicate your reference ID as "Hardtalk 24 Aug" for record purposes. We will only issue receipt upon request. For enquiries, contact Azwan 012-9338709

[susmalaysia@gmail.com](mailto:susmalaysia@gmail.com) [www.msia.org](http://www.msia.org) Malaysian Association of Social Impact Assessment

## SIA HARD TALK

WEDNESDAY, 24 FEBRUARY 2021  
1600 - 1730 HRS

**TOPIC**  
Improving SIMP - Perspectives of SIA Review Panel Members

## HARD TALK MSIA

### CURRENT PRINCIPLES AND PRACTICES OF SOCIAL IMPACT ASSESSMENT (SIA): AN INTERNATIONAL PERSPECTIVE

28th October 2021  
04:00 PM - 05:30 PM (MY Time)  
09:00 AM - 10:30 AM (UK Time)

Meeting ID: 872 2532 5250  
Passcode: 680101

**SPEAKER**  
Prof. John Glasson  
Faculty of Technology, Design and Environment,  
Oxford Brookes University  
Oxford, United Kingdom.  
Member of International Association for Impact Assessment (IAIA)

**MODERATOR**  
TPr Dr. Gobi Krishna Sinniah  
Exco Member  
Malaysian Association of Social Impact Assessment (MSIA)

## # SIA and ESG

### Sustainable Horizon: The Anchor of ESG Practices

Special Webinar Series : SusDIA2024 Conference

TPr. Hertina Ab Aziz  
Panel

Prof. Ir. Ts. Dr Mohd. Fadhil bin Md Din  
Panel

Date: 4 March 2024  
Time: 10.00 am - 12.00 noon  
Include E-Certificate

Live Webinar Fee Professionals RM30 | Students RM10

Dr. Wan Nurul Mardiah Wan Mohd Rani  
Moderator

## # Public Participation

SEMBANG PAGI SABTU

### PUBLIC PARTICIPATION: MANAGING CLIENT AND STAKEHOLDER EXPECTATIONS

20th November 2021  
10:00 AM Kuala Lumpur

Meeting ID: 845 8246 5499  
Passcode: 457354

**SPEAKERS**  
Ms. Elly Bahayu Jainam  
ERE Consulting Group Sdn Bhd

Assoc. Prof. Dr. Kuppusamy Singaravelloo  
Exco MSIA

**MODERATOR**  
Dr. Mohd Shahwahid Hj. Othman  
Exco MSIA

**SHARING IDEAS WITH THE WORLD**  
A Casual Forum by the Malaysian Association of Social Impact Assessment to encourage discussion on various topics related to social impact assessment.

TPR Dr. Gobi Krishna  
Exco MSIA





# QUANTIFICATION OF IMPACT AND LEVEL OF SIGNIFICANCE



**Standard Impact Rating Score Matrix**

Severity	Probability				
	Very Unlikely (1)	Unlikely (2)	Possible (3)	Likely (4)	Very Likely (5)
Negligible (1)	1	2	3	4	5
Minor (2)	2	4	6	8	10
Medium (3)	3	6	9	12	15
Critical (4)	4	8	12	16	20
Catastrophe (5)	5	10	15	20	25



**Maslow's Hierarchy of Needs**



- Not Significant
- Significant (Low Priority)
- Significant (Medium Priority)
- Significant (High Priority)
- Significant (Very High Priority)

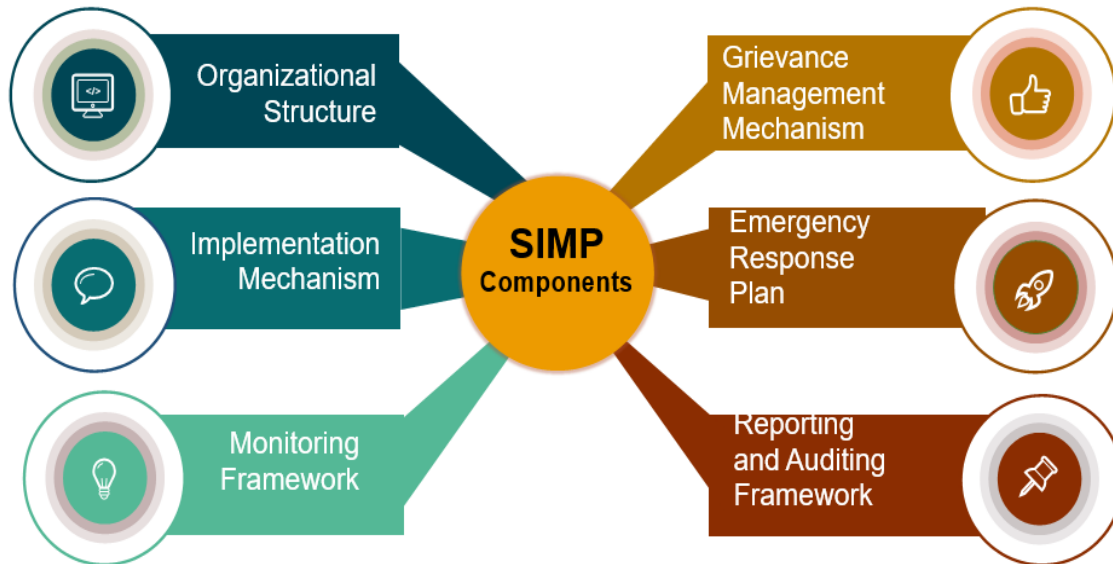
**Quantitatively defining of impact and level of significance provides clarity and facilitates decision-making. However assigning a score to intangible social impacts poses a distinct challenge.**

**Many social science impact assessors find themselves more at ease resorting to subjective assessment methods in grappling with these intricate, less tangible aspect.**



**Social Impact Management Plan**

Component 1			Component 2	Component 3		Component 4	
Social Impact, Risk Level and Mitigation Measures			Consensus Target	What and Who to Implement Mitigation?		Who to Monitor and When?	
Impacts	Significant Level	Mitigation Measures	Expected Outcome	Key Performance Indicator (KPI)	Implementing Agencies	Monitoring Frequency	Monitoring Agency
<b>PRE-CONSTRUCTION PHASE</b>							
Land and property loss	High	Fair compensation. Relocation assistance and resettlement.	Better socio-economic status after the project	Compensation received within 3 months after the investigation at the Land Office	Land Administrator / Project Proponent	Every 3 months	State Economic Planning Unit (SEPU)



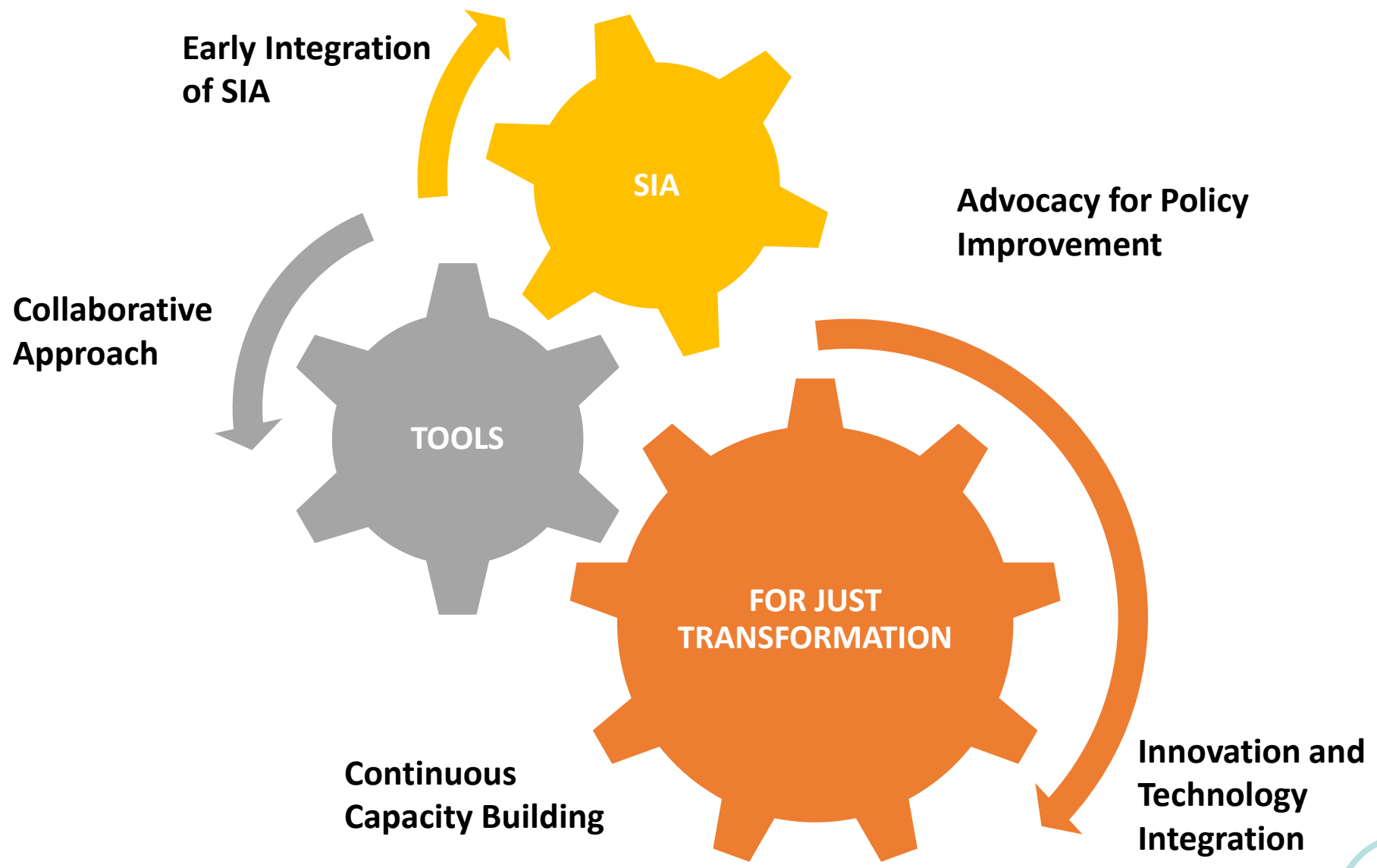
**Roundtable Discussions on Post-SIA by MSIA/PLANMalaysia**

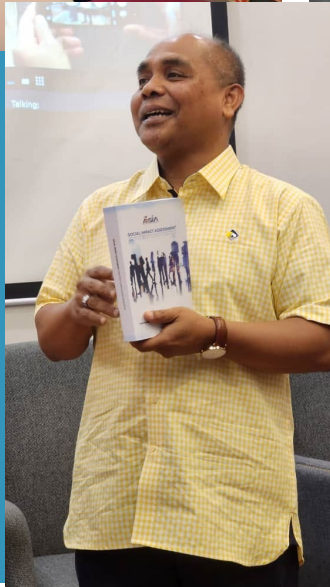


**Evaluation of current practices and its effectiveness, identify gaps, streamlining the practices and enhance capacity of SIA professionals in Post-SIA services**



# CONCLUSION





Get your copy by  
emailing us at

[siamalaysia@gmail.com](mailto:siamalaysia@gmail.com)  
[herlinaabaziz@gmail.com](mailto:herlinaabaziz@gmail.com)



**DO CONTACT US @:**  
**MALAYSIAN ASSOCIATION OF  
SOCIAL IMPACT ASSESSMENT**  
D2-06-11, Tamarind Square,  
Persiaran Multimedia,  
68000 Cyberjaya,  
Selangor Darul Ehsan,  
Malaysia.  
Email: [siamalaysia@gmail.com](mailto:siamalaysia@gmail.com)  
Website: <https://msiamy.org>

