

SESSION 215

TITLE: EXPLORING THE LIMITATIONS OF SIA IN ACHIEVING SUSTAINABLE DEVELOPMENT

STRENGTHENING SOCIAL IMPACT ASSESSMENT AS A TOOL TO FACILITATE JUST TRANSFORMATION IN MALAYSIA



TPr Herlina Ab Aziz

PRESIDENT

MALAYSIAN ASSOCIATION OF SOCIAL IMPACT ASSESSMENT

Malaysia

<https://msiamy.org>

siamalaysia@gmail.com



CONTENTS:

- 1 The Introduction to Malaysian Social Impact Assessment Association (MSIA)
- 2 Key Principles of Just Transformation
- 3 Redefining Challenges of Social Impact Assessments (SIA) in Malaysia and summary Actions to Strengthen SIA Tools and Practices to Facilitate Just Transformation



BACKGROUND OF MALAYSIAN ASSOCIATION OF SOCIAL IMPACT ASSESSMENT (MSIA)

The Malaysian Association of Social Impact Assessment (MSIA) was established under the Registrar of Societies Malaysia on 2005.

MSIA is an association of multi-disciplinary professionals, open to all Malaysians from various fields including:

- Town Planners
- Socio-economists
- Environmentalists
- Engineers
- Sociologist
- Psychotherapists
- Legislators
- Academicians
- Researchers

OUR VISION

**“SAFEGUARDING
THE WELLBEING OF
OUR COMMUNITY”**



OUR MISSION



To strengthen the practice of social impact assessment in policy, programmes and projects.



<https://msiamy.org/members/>



Equity

Fair distribution of costs and benefits particularly for marginalized or vulnerable communities.



Participation

Engaging diverse stakeholders in decision-making processes to ensure their voices are heard and their perspectives are considered



Accountability & Transparency

Holding the construction industry and decision-makers responsible for the consequences of their actions and ensuring mechanisms for transparency and oversight in process and outcomes.



Sustainability

Promoting long-term sustainability - interconnections between social economic and environmental factors



Recognition of Diversity

Acknowledging the diversity of perspectives knowledge systems and values and incorporating these into decision-making processes.



Redress

Providing mechanisms for addressing past injustices and remedying inequalities

TYPE OF SOCIAL IMPACT ASSESSMENTS IN MALAYSIA



**FINANCIER/ DONOR
REQUIREMENT**

**CERTIFICATION
REQUIREMENT**

**STATUTORY
REQUIREMENT**

SIA to meet requirements
of financial institutions

SIA for certification
schemes such as Malaysian
Sustainable Palm Oil, RSPO
& FSC

SIA for Project Devt

Under the purview of the
**Town & Country Planning
Act**

SIA in feasibility
assessment/studies

SIA

SEIA in EIA

SIA in EIA (Environmental
Quality Act)

SIA in EIA (Natural Resources
& Environment Ordinance)
SARAWAK

SIA in EIA (Environment
Protection Enactment) **SABAH**

SIA for programmes or
policies

VOLUNTARY

*For Sustainability Goal,
ESG etc.*

REDEFINING CHALLENGES & ACTIONS TO STRENGTHEN SIA PRACTICES



Enhancing SIA Mandates: Addressing Recognition Gaps

SIA is currently mandated only at the development project level, lacking recognition and mandatory status at the feasibility study and land approval processing levels.



Raising Awareness: Overcoming SIA Perception Barriers

A lack of awareness regarding social safeguards among stakeholders in the development industry, combined with a disproportionate focus on economic development, results in SIA being perceived as a barrier and a source of delays in development approval procedures.



Improving SIA Capabilities: Enhancing Methodology and Expertise

The current capabilities of SIA assessors and consultants are inadequate, necessitating the enhancement of SIA methodology and approach to provide better inputs for decision-making processes.

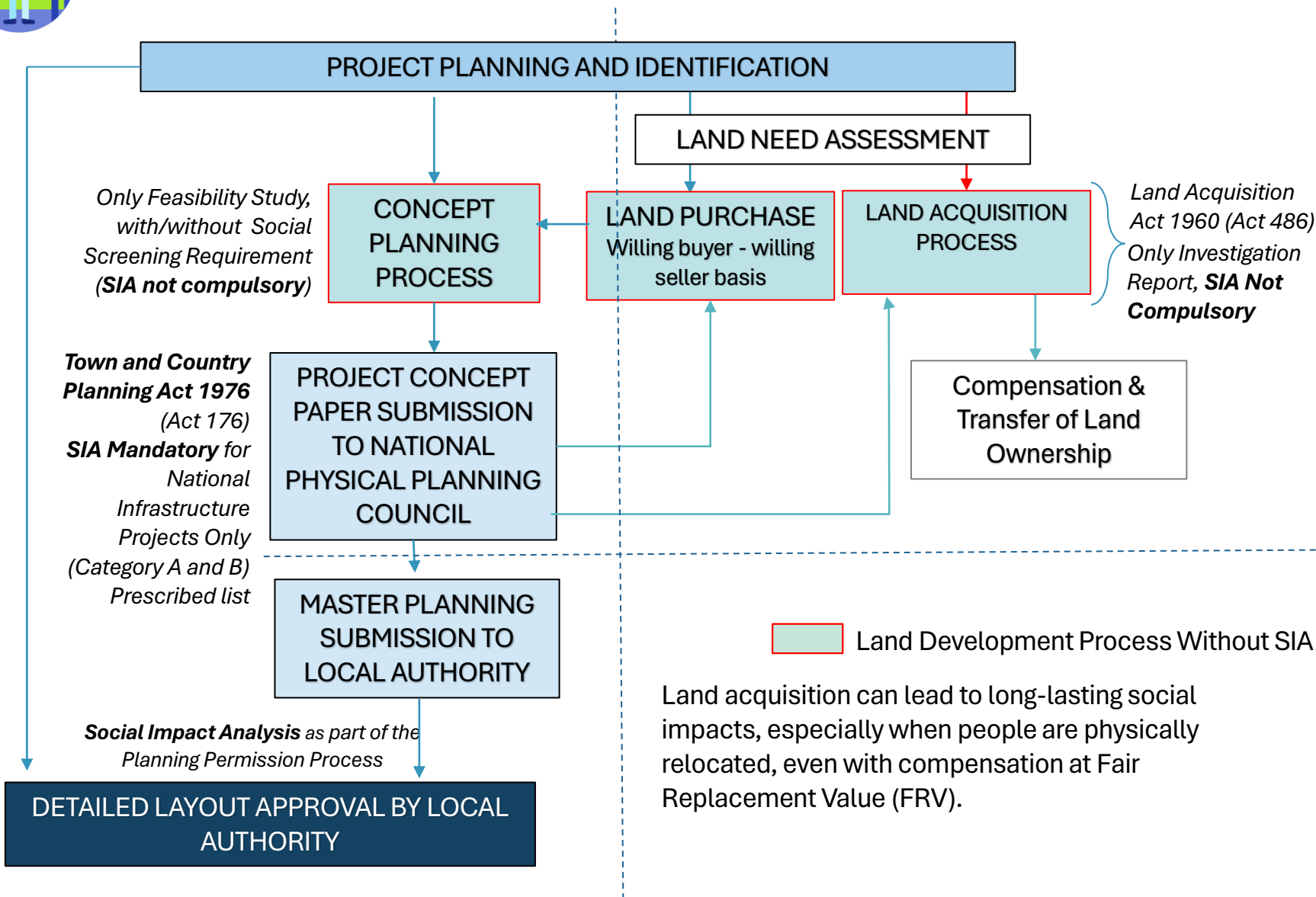


Strengthening Legal Frameworks for Effective SIA Implementation

The existing framework for the implementation and monitoring of SIA is inadequate, resulting in challenges in fully implementing mitigation actions.



SIA FOR EARLY DECISION MAKING FOR DEVELOPMENT PROJECTS





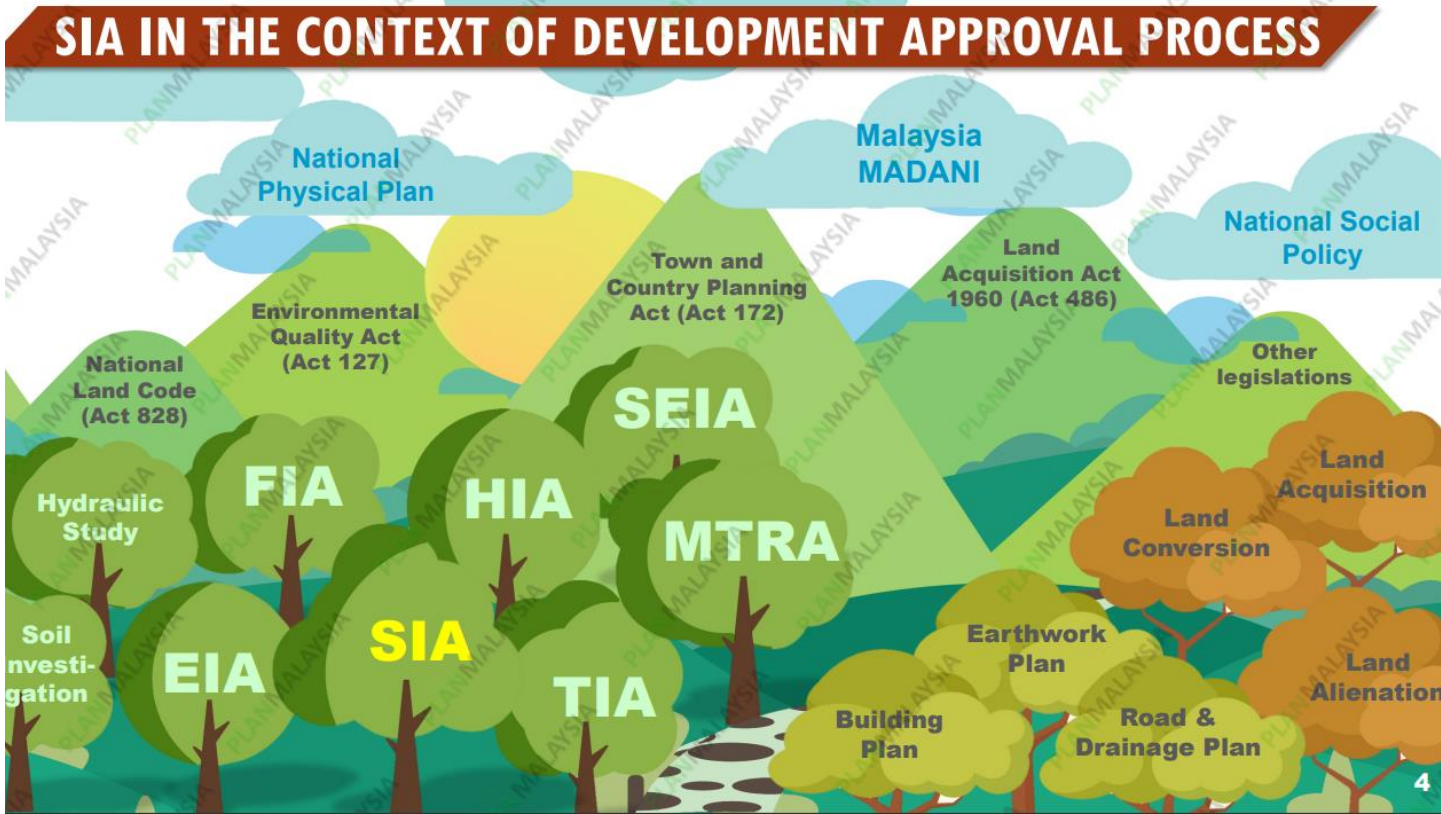
STRENGTHENING INSTITUTIONAL FRAMEWORK

Boosting Investor Confidence in Malaysia by Streamlining Impact Assessment Processes for Project Approvals



Ease Of Doing Business

The Malaysian government will explore streamlining and enhancing the efficiency of various impact assessment processes in Malaysia. This involves simplifying project approval procedures while maintaining rigorous assessment standards and environmental/social safeguards.



INFORMED DECISION MAKING FOR DEVELOPMENT PROJECTS



SIA FUNCTION

PROJECT PROPONENT



SIA is a **project planning tool** for the Project Proponent.

Analysis, scientific studies & predictions from the SIA should lead to better project planning in terms of social aspects, reduce cost to the society, minimise business risks and comply with all regulations.

GOVERNMENT



SIA report is a **decision-making tool** for the Government

The SIA reports should provide sufficient and reliable information about the impacts and mitigation measures to enable the Government to make informed decisions, in line with the national's policies and aspirations.



Business plan	National policies
Return on investment	Laws & regulations
Shareholders' mandate	E&S governance

National vision	National priorities
Law & regulations	Policies
Public interest	International obligations

Project Proponent		
Engineers	Consultants	Planners
Supplier	Bankers	Contractor
Lawyers	Accountants	Salesman

Government		
Civil service		
Panel of experts	Public budget	Courts
Licensing		Incentives

3 criteria need to be fulfilled :

The project must be in line with national policies & laws

Benefits to society surpass costs to society

Adverse impacts must be reduced to acceptable levels

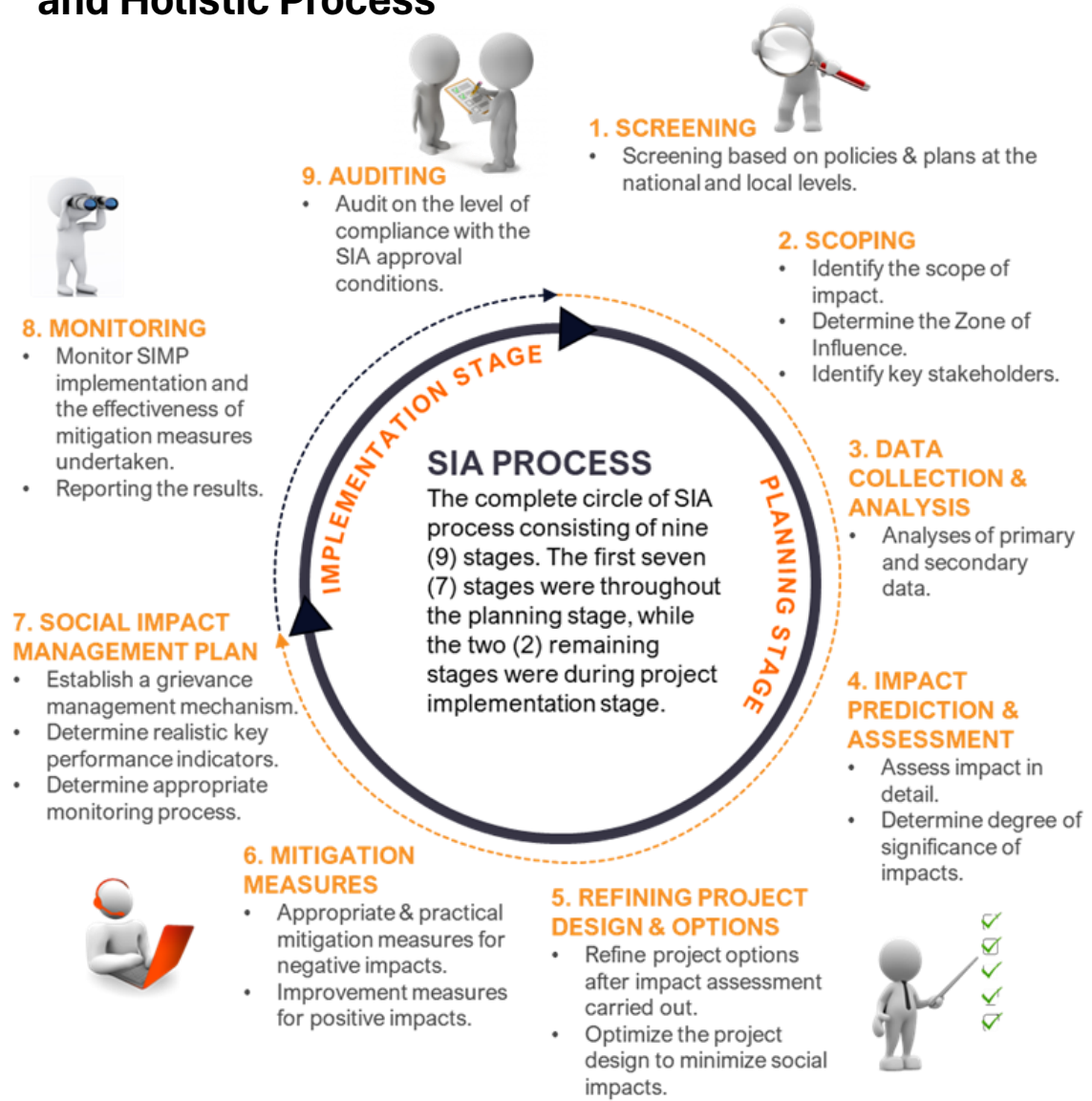
REDEFINING CHALLENGES

Recognizing SIA as an ongoing process enables organizations to be flexible, responsive, and adaptive.

This approach optimizes expenses, promotes stakeholder engagement, and ensures long-term sustainability.

It's a comprehensive, iterative process that considers social impacts at every stage of development.

Challenges in Embracing SIA as a Key Planning Tool and Holistic Process





SIA AND SOCIAL SAFEGUARDS PROMOTION IN CONFERENCES ATTENDED BY CONSTRUCTION INDUSTRIES

SIA Symposium and Module 1 Competency Courses involving property developers

LEADING ESG IN CONSTRUCTION CONFERENCE International Construction Week (ICW) 2023.

SIMPOSIUM SIA
PENILAIAN IMPAK SOSIAL BAGI PROJEK PEMBANGUNAN
2023

Ucapan Perasmian oleh: YBrs. TPr Dr. Alias bin Rameli, Ketua Pengarah Perancangan Bandar dan Desa

KERTAS KERJA SIMPOSIUM SIA 2023

- KERTAS KERJA 1:** SIA DALAM KONTEKS PERSEKUTUAN dengan TPr Zamrihan bin Dui, Pengarah Bahagian Perancangan dan Kajian SIA, Perancangan PLANMalaysia
- KERTAS KERJA 2:** PENGENALAN KERTAS PENILAIAN IMPAK SOSIAL DAN BANTUAN PELAKSANAAN (IPSI) oleh TPr Carlos Perez-Brito, Sarjana Penyelidikan dalam Pembangunan, PLANMalaysia
- KERTAS KERJA 3:** AMALAN TERKINI SOKONGAN LAPORAN PENILAIAN IMPAK SOSIAL oleh TPr Nizam Daut, Ketua UH SIA, PLANMalaysia
- KERTAS KERJA 4:** KOTEDA PERSEKUTUAN SEBAGAI PENTADA DAN PENJAJI LAPORAN SIA oleh Dr. Muhamad Yusoff bin Mohd Rusli, Timbalan Pengarah Bahagian Penyelidikan dan Penyelidikan, PLANMalaysia

SESI PERBINCANGAN PANEL 1: PELAKSANAAN SIA UNTUK PROJEK INFRASTRUKTUR UTAMA

Moderator: TPr Herlina Ab Aziz, President, Malaysian Association of Social Impact Assessment (MSIA)

Panel 1: Mr. Carlos T Perez-Brito, Senior Social Specialist, World Bank

Panel 2: Enck Mohd Nizam Daut, Timbalan Pengarah Projek, Malaysia Rail Link Sdn. Bhd (MRL)

Panel 3: Dr. Mohd Shahwahid bin Haji Othman, Committee Members, Malaysian Association of Social Impact Assessment (MSIA)

SESI PERBINCANGAN PANEL 2: PENYEDIAAN SIA KATEGORI B

Moderator: TPr Saiful Azman Abdul Rashid, Council Members, Malaysian Institute of Planner (MIP)

Panelist 1: TPr Rozita bt Hamit, Pengarah, PLANMalaysia Pulau Pinang

Panelist 2: Dr. Afzizan Aziz, Pengarah, DF Planning PLT

Panelist 3: Enck Zawawi Wahab, Head of Subsidiary, Property Division, Bina Darul Aman Berhad (BDB)

Anjuran: PERSATUAN PECAHAWI PERANCANG BANDAR DAN DESA MALAYSIA
Dengan Kerjasama: PLANMalaysia, MALAYSIA MADANI, MSIA

Disokong Oleh: MSIA



MALAYSIA URBAN FORUM SIA and Social Inclusion in Cities

Time For Action: Social Inclusion in Cities: Take Action, Make Impact
Masa Untuk Tindakan: Kemasukan Sosial di Bandar: Ambil Tindakan, Beri Impak

7 November 2023 | 4.00 PM - 5.30 PM | Satok Ballroom, 3rd Floor, Hikmah Exchange Event Centre (HEEC)

Moderator: Sri Husnaini Sofyan, Member, Committee

Discussant: Mr. ...

Panelists: Tuan Haji Jazir Razmy Madi, Prof Dr Abdul Ghafur Jemali, Puan Herlina, ABD Aziz, Dr. Anis Rashed Bin Abu Bakar

Organised by: ...
Host City: ...
Main Partner: ...



SIA REVIEW PANEL MEETINGS FOR APPROVAL OF SIA

Accountability & Transparency

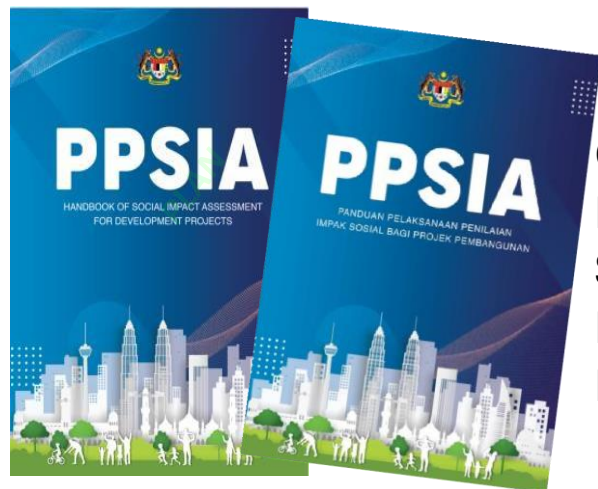
MSIA as one of the Panelists at PLANMalaysia HQ dan PLANMalaysia (State) in assessing SIA reports submitted by applicants for approval





STRENGTHENING SIA METHODOLOGY

To enhance the credibility and reliability of SIA findings, prioritize achieving sustainable, equitable, and inclusive development outcomes in decision-making processes



Guidance for the Implementation of SIA for Development Projects (2023)

NEW UPDATE

SIA Category A

Projects of national significance - require

advice from NPPC*

*NPPC: National Physical Planning Council chaired by **the** Prime Minister

NEW UPDATE

SIA Category B

Projects that has significant social impacts at state level

Introduction

SIA by Category

Public Engagement in SIA study

SIA Process

NEW UPDATE

Screening and Scoping

NEW UPDATE

Data Collection

NEW UPDATE

Evaluation Impacts

NEW UPDATE

Mitigation Measures

NEW UPDATE

Social Impacts Management Plan

Evaluation of SIA Report

NEW UPDATE

Monitoring and Auditing

NEW UPDATE

Qualified Person

NEW UPDATE

Appendixes

Actions needed include:

1. Deploying tech-driven methods such as remote sensing and digital surveys in rural areas for precise and prompt data collection.
2. Establishing uniform protocols for data gathering to maintain consistency across different SIAs.
3. Maintaining a centralized database to store and distribute SIA-related data for stakeholders' easy access.
4. Collaborating with local communities, NGOs, and academia to broaden data collection and ensure comprehensive coverage.
5. Regularly reviewing data collection processes to enhance quality and identify areas for improvement.

S-CHARMs

SISTEM CIRI-CIRI SPATIAL DESA MALAYSIA SPATIAL CHARACTERISTICS OF RURAL MALAYSIA SYSTEM

A database system and spatial analysis of rural geographic information (GIS) to help make decisions on rural planning and development.



**SIA RAPID APPRAISAL
DECISION SUPPORT SYSTEM
(SIRA)**

- Industry Matching Program 2024
UniSZA-MSIA-PEERS

RAPID ASSESSMENT



REDEFINING CHALLENGES

Big Data Initiatives



Ease Of Doing Business



Malaysia Geoport
Pusat Geospasial Negara
Kementerian Sumber Asli dan Kelestarian Alam

Home About Us Services Contact Us

Malaysia Geospatial Data Sharing Platform

Provides Free Fundamental Geospatial Data for Malaysia Government Agencies, Public University Students and Researchers



User Manual

Kamus Kategori Guna Tanah

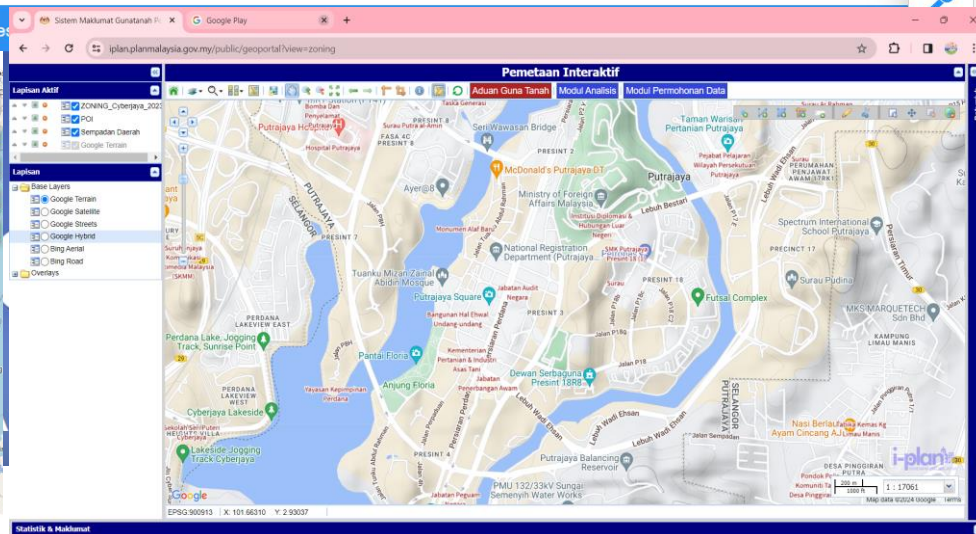
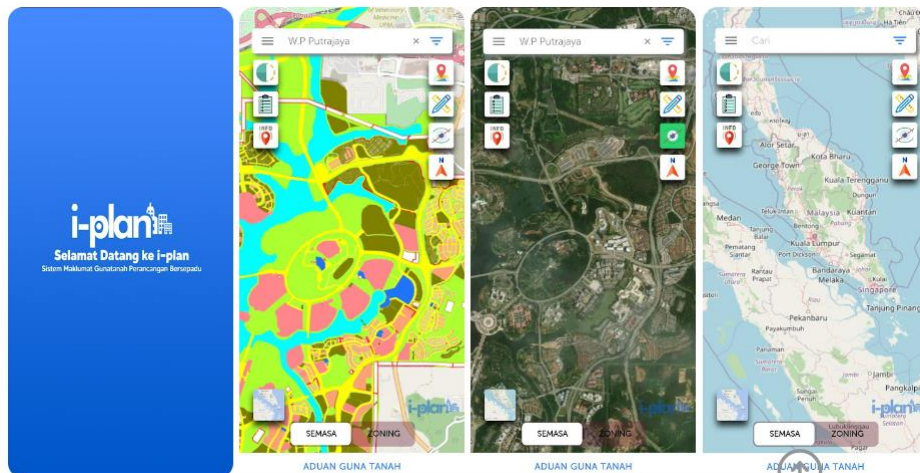
Kakitangan

<https://newss.statistics.gov.my/newss-portalx/ep/epLogin.seam>



PLAN Malaysia
Jabatan Perancangan Bandar dan Desa

Home Dashboard About I-Plan Services Data Geospatial Application Frequently Asked Questions



<https://www.mygeoport.gov.my/en/>

<https://iplan.planmalaysia.gov.my/>



Improving SIA Capabilities:
Enhancing Methodology and
Expertise

THE CAPACITY BUILDING ACTIVITIES & COMPETENCY COURSES

3 levels of training i.e Beginner, Intermediate and Advanced level

SIA Professionals Accreditations by PLANMalaysia

No. Sijil
PLANMalaysia 2022/0043216408



PLANMalaysia
*Perancangan Melempak Ke hadapan
Planning Beyond Conventional*

PERAKUAN PENDAFTARAN

INI ADALAH UNTUK MEMPERAKUI BAHAWA

Nama: **TPr Herlina binti Ab Aziz**
No. Kad Pengenalan: **660602-04-5286**
No. Siri Pendaftaran: **SIA 018 / 2022**

Alamat: **MALAYSIAN ASSOCIATION OF SOCIAL IMPACT ASSESSMENT
D2-06-11 TAMARIND SQUARE,
63000 CYBERJAYA
MALAYSIA**

yang telah mematuhi kehendak-kehendak pendaftaran untuk didaftarkan sebagai
PENILAI dan PENYEDIA BERDAFTAR Laporan SIA bagi projek pembangunan.

Perakuan Pendaftaran ini tamat tempoh pada **31 Disember 2023**

Tarikh dikeluarkan: **JUN 2022**




DATUK M NOOR RAZMAN BIN TAIB
Ketua Setiausaha
Kementerian Perumahan dan Kerajaan Tempatan

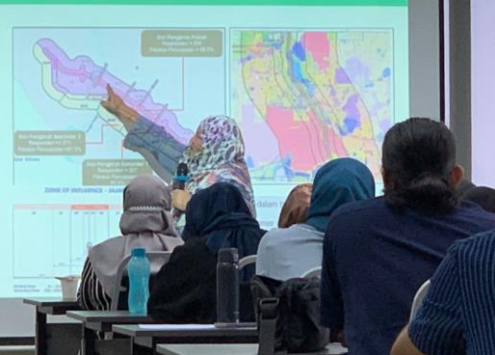




PHYSICAL WORKSHOPS / SIA COURSES

Capacity Building Programs for SIA Professionals

PENENTUAN ZON PENGARUH (ZOI)



TOPIK

PENENTUAN ZON PENGARUH IMPAK (ZOI) DALAM PENYEDIAAN SIA BERKUALITI

20th OCT 2022

Khamis
3:00 - 4:30 PM

Penceramah

TP. Herlina Ab. Aziz
Presiden MSIA

Moderator

TP. Dr. Gobi Krishna
Exco MSIA

Register
NOW!

WORKSHOP ON SOCIAL IMPACT ASSESSMENT (SIA) METHODOLOGY & PRACTICES



RM 650 MSIA member
RM 760 Non-MSIA member

40 LIMITED TO
PARTICIPANTS

Date: 19-20th February 2024



RAIA Hotel & Convention
Centre, Kuching, Sarawak



- Interactive Learning
- Industry-Relevant Content
- Expert Facilitators
- Networking Opportunities

SIA METHODOLOGY



ABOUT THE COURSE

This intensive course delves directly at providing an in-depth understanding of underlying methodology concepts for SIA professionals and practitioners. It also includes case studies and best practices in methodology.

CONTENTS

- Introduction to SIA in Sarawak
- Methodological Framework for SIA
- Principles in Methodology
- Screening, Scoping and ZOI
- Sampling and techniques
- Baseline Data Collection
- Implications of Methodology
- Impact Imputations
- SIA for Plantation
- Case Studies



Course Facilitator 1

DR. KUPPUSAMY SINGARAVELLOO
MSIA Exco
MSIA Professional Member A010
PLANMalaysia Registered SIA Assessor
and Practitioner SIA 021/2022



Course Facilitator 2

TPR DR. GOBI KRISHNA SINNIAH
MSIA Professional Member A013
PLANMalaysia Registered SIA Assessor
and Practitioner SIA 023/2022



Course Facilitator 3

HJ SAPHERI BIN ROSLI
MSIA Ordinary Member B292
Manager, Corporate Affairs Division
Land Custody and Development
Authority Sarawak



MALAYSIA ASSOCIATION OF SOCIAL IMPACT ASSESSMENT Webinars/Talks 2019-2024



Socio-Economic

Land Acquisition

Social Impact Management Plan

SIA AND SOCIO-ECONOMIC ASSESSMENT

9th October 2021
10:00 AM Kuala Lumpur

Meeting ID: 823 4574 1255
Passcode: 900152

MODERATOR
Dr. Mohd Shahwahid HJ Othman
Exco MSIA

SHARING IDEAS WITH THE WORLD
A Casual Forum by the Malaysian Association of Social Impact Assessment to encourage discussion on various topics related to social impact assessment.

SPEAKERS
Dr. Awwang Noor A. Ghani
President of Malaysian Environmental Economics Assoc. Executive Committee Member, Economy and Environment Partnership for Southeast Asia (EEPSEA)

Dr. Kamaruzaman HJ Ujang
KRU, Socio-economic Research Consultant
ACV Sustainability Sdn bhd

HARD TALK MSIA

05/2023

Meeting ID: 893 2385 7931
Passcode: 096002

LAND ACQUISITION

CRITICAL ISSUES AND THE ROLE OF SIA

24th AUG 2023 THURSDAY 2.30 PM – 4.00 PM

LAND ACQUISITION?

Speaker
Professor Dr Haji Ismail Omar
President, Pertubuhan Profesional Tanah Malaysia@PERTAMA
Honorary Professor
Infrastructure University Kuala Lumpur.

Moderator
TPr Dr. Gobi Krishna Sinniah
Chairman of Training Committee
MSIA No A013

Webinar registration fee of RM 20. Please make payment to "Pertubuhan Penilaian Impak Sosial Malaysia" via on-line transfer to Maybank Account 562151007152. Email proof of payment to siamalaysia@gmail.com and indicate your reference ID as "Hardtalk 24 Aug" for record purposes. We will only issue receipt upon request. For enquiries, contact Azwan 012-9338709

siamalaysia@gmail.com www.msia.org Malaysian Association of Social Impact Assessment

Malaysian Association of Social Impact Assessment

SIA HARD TALK

WEDNESDAY, 24 FEBRUARY 2021
1600 – 1730 HRS

TOPIC
Improving SIMP - Perspectives of SIA Review Panel Members

HARD TALK MSIA

CURRENT PRINCIPLES AND PRACTICES OF SOCIAL IMPACT ASSESSMENT (SIA): AN INTERNATIONAL PERSPECTIVE

28th October 2021
04:00 PM – 05:30 PM (MY Time)
09:00 AM – 10:30 AM (UK Time)

Meeting ID: 872 2532 5250
Passcode: 680101

SPEAKER
Prof. John Glasson
Faculty of Technology, Design and Environment,
Oxford Brookes University
Oxford, United Kingdom.
Member of International Association for Impact Assessment (IAIA)

MODERATOR
TPr. Dr. Gobi Krishna Sinniah
Exco Member
Malaysian Association of Social Impact Assessment (MSIA)

SIA and ESG

Sustainable Horizon: The Anchor of ESG Practices

Special Webinar Series : SusDIA2024 Conference

TPr. Hertina Ab Aziz
Panel

Prof. Ir. Ts. Dr Mohd. Fadhil bin Md Din
Panel

Date: 4 March 2024
Time: 10.00 am - 12.00 noon
Include E-Certificate

Live Webinar Fee Professionals RM30 | Students RM10

Dr. Wan Nurul Mardiah Wan Mohd Rani
Moderator

Public Participation

SEMANG PAGI SABTU

PUBLIC PARTICIPATION: MANAGING CLIENT AND STAKEHOLDER EXPECTATIONS

20th November 2021
10:00 AM Kuala Lumpur

Meeting ID: 845 8246 5499
Passcode: 457354

SPEAKERS
Ms. Elly Bahayu Jainam
ERE Consulting Group Sdn Bhd

MODERATOR
Dr. Mohd Shahwahid HJ. Othman
Exco MSIA

Assoc. Prof. Dr. Kuppusamy Singaravelloo
Exco MSIA

TPr. Dr. Gobi Krishna
Exco MSIA

SHARING IDEAS WITH THE WORLD
A Casual Forum by the Malaysian Association of Social Impact Assessment to encourage discussion on various topics related to social impact assessment.

QUANTIFICATION OF IMPACT AND LEVEL OF SIGNIFICANCE



Standard Impact Rating Score Matrix

Severity	Probability				
	Very Unlikely (1)	Unlikely (2)	Possible (3)	Likely (4)	Very Likely (5)
Negligible (1)	1	2	3	4	5
Minor (2)	2	4	6	8	10
Medium (3)	3	6	9	12	15
Critical (4)	4	8	12	16	20
Catastrophe (5)	5	10	15	20	25

- Not Significant
- Significant (Low Priority)
- Significant (Medium Priority)
- Significant (High Priority)
- Significant (Very High Priority)



Maslow's Hierarchy of Needs



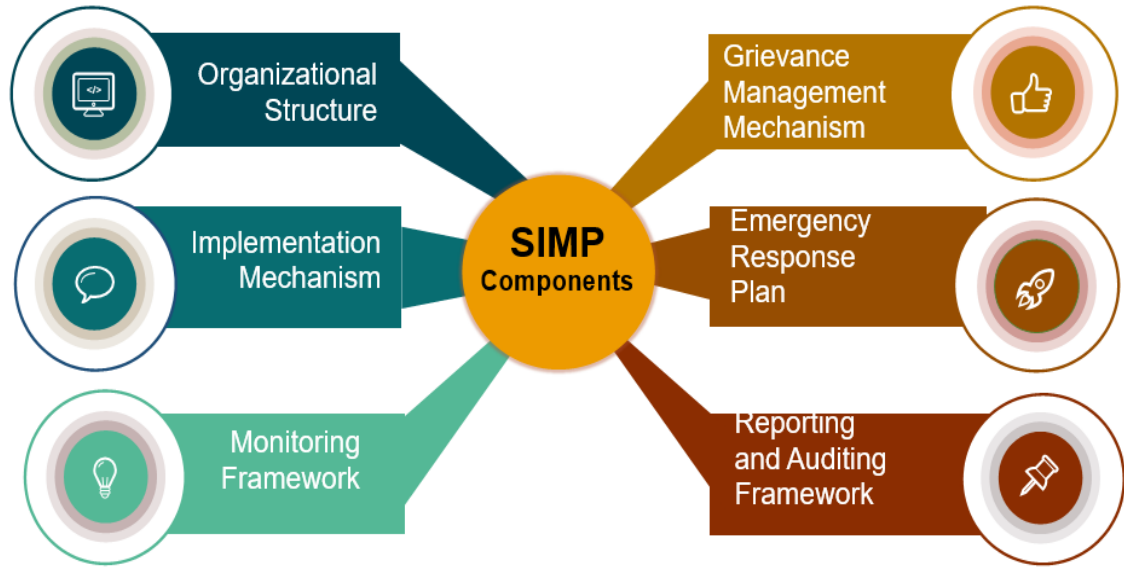
Quantitatively defining of impact and level of significance provides clarity and facilitates decision-making. However assigning a score to intangible social impacts poses a distinct challenge.

Many social science impact assessors find themselves more at ease resorting to subjective assessment methods in grappling with these intricate, less tangible aspect.



Social Impact Management Plan

Component 1			Component 2	Component 3		Component 4	
Social Impact, Risk Level and Mitigation Measures			Consensus Target	What and Who to Implement Mitigation?		Who to Monitor and When?	
Impacts	Significant Level	Mitigation Measures	Expected Outcome	Key Performance Indicator (KPI)	Implementing Agencies	Monitoring Frequency	Monitoring Agency
PRE-CONSTRUCTION PHASE							
Land and property loss	High	Fair compensation. Relocation assistance and resettlement.	Better socio-economic status after the project	Compensation received within 3 months after the investigation at the Land Office	Land Administrator / Project Proponent	Every 3 months	State Economic Planning Unit (SEPU)



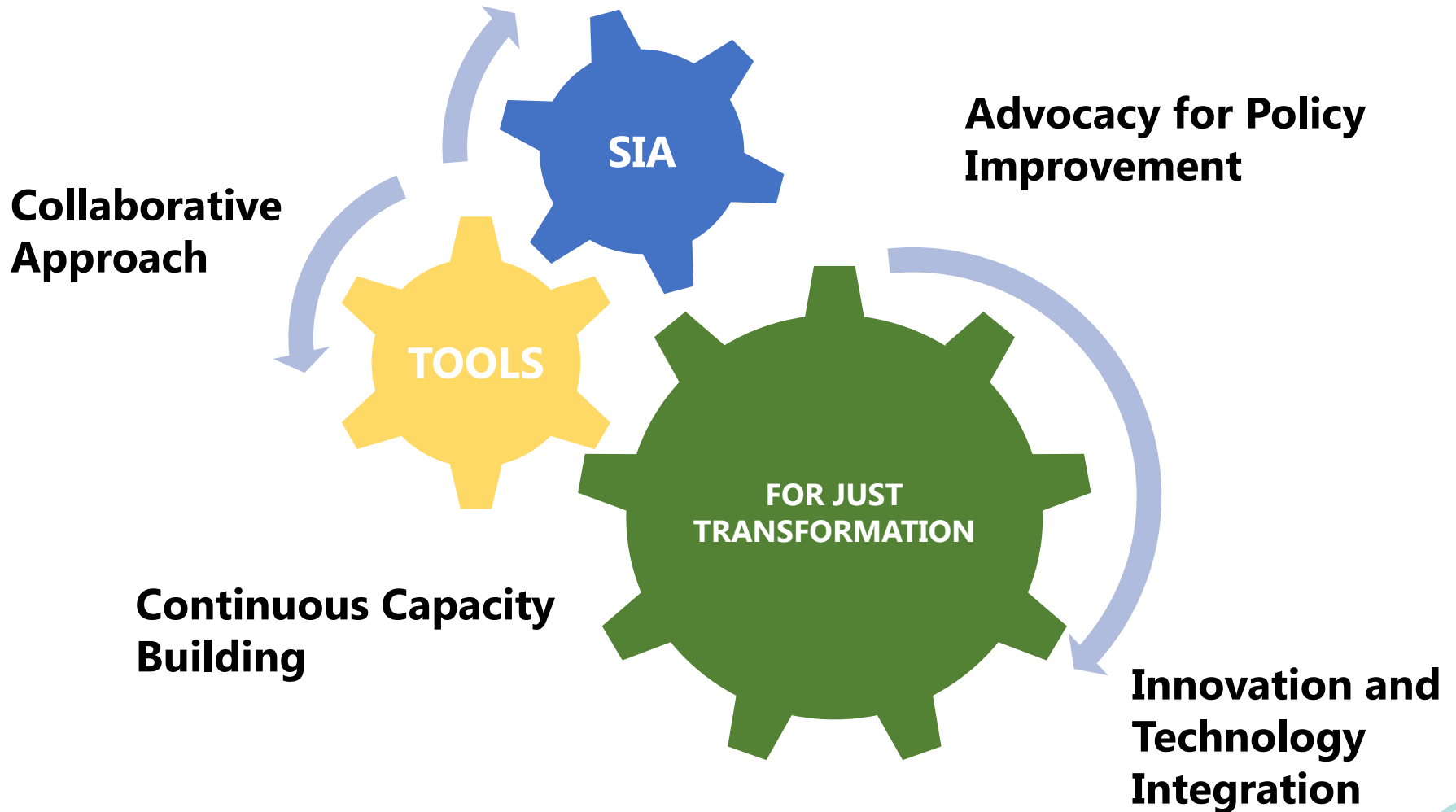
Roundtable Discussions on Post-SIA by MSIA/PLANMalaysia



Evaluation of current practices and its effectiveness, identify gaps, streamlining the practices and enhance capacity of SIA professionals in Post-SIA services

CONCLUSION

Early Integration of SIA



Get your copy by emailing
us at :

**MALAYSIAN ASSOCIATION OF
SOCIAL IMPACT ASSESSMENT**
D2-06-11, Tamarind Square,
Persiaran Multimedia,
68000 Cyberjaya, Selangor
Darul Ehsan, Malaysia.
Email: siamalaysia@gmail.com
herlinaabaziz@gmail.com
Website: <https://msiamy.org>



**MSIA PUBLICATION BOOK
SOCIAL IMPACT ASSESSMENT;
PRACTICES AND APPLICATION
IN MALAYSIA.**