

Mitigating the Impacts of the Energy Transition on Vulnerable Communities



Etisang Abraham

*Environmental Consultant/WRc Ltd (part of RSK)
United Kingdom*

Etisang.Abraham@wrcgroup.com

<https://www.linkedin.com/in/etisang-abraham-454416152/>

wrcgroup.com

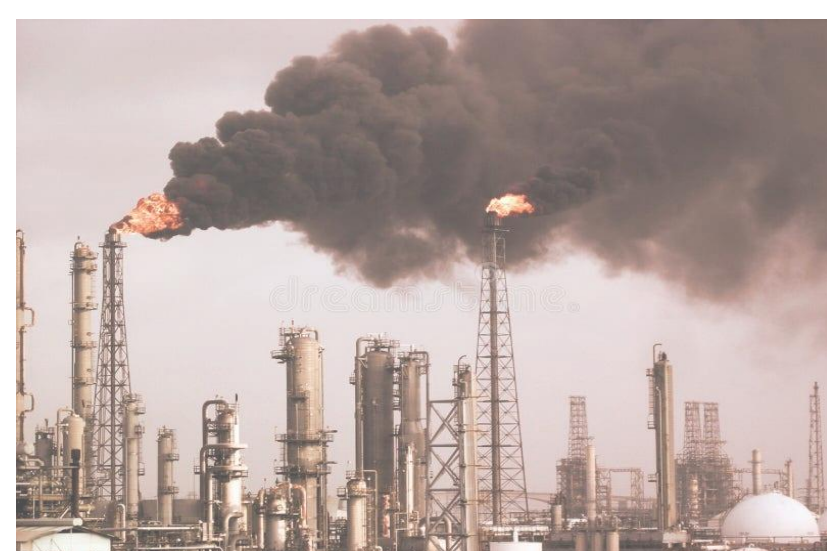


Outline

- *Introduction - Need for energy transition*
- *Analysing the impacts of the energy transition*
 - ✓ *Environmental impacts*
 - ✓ *Social impacts*
 - ✓ *Economic impacts*
- *Just energy transition for vulnerable communities*
 - ✓ *Workers*
 - ✓ *Host communities*
 - ✓ *Indigenous peoples*
- *Conclusion*

Need for energy transition

- Climate change causing loss of habitats, ecosystems, wildfires, flooding and melting of the Arctic
- Fossil fuels account for 82% of global energy use – electricity, heating and transport
- Non-fossil fuel sectors – construction, agriculture, technology and manufacturing
- Renewable energy a sustainable alternative to fossil fuels





Analysing the impacts of the energy transition - Environmental impacts

- Water requirement for biofuel plants can compete with other water uses for domestic uses and livestock
- Batteries for renewable energy sources not yet recycled
- Disturbance of peatland, wildlands and biodiversity disruption during renewable energy project development
- Outsourced emissions from renewable equipment production



Boat Regatta festivals in the Niger Delta region



Reservoir of Dalles Dam on the River Columbia flooded the neighbouring Celilo village.

Social impacts

- Risk of flooding of homes, farmlands, and villages from hydro-electricity dams – Cree nation
- Communal lands, heritage sites, and ancestral graves may be required for renewable energy development
- Cultural festivals may be affected by renewable energy development



Economic impacts

- Local economy such as fishing and farming may be affected by renewable energy development
- Businesses in affected fishing communities such as seafood sellers, restaurants, and water based transportation
- Job losses for fossil fuel workers



Just energy transition for vulnerable communities - Workers

- Engagement with workers' union to understand adverse impacts
- Provide upskilling and retraining for fossil fuel workers
- Provide on the job training for workers





Host communities

- Host communities energy transition impact assessment
- Social inclusion of all groups
- Community benefits from fossil fuels should be replaced
- Restorative justice and environmental remediation

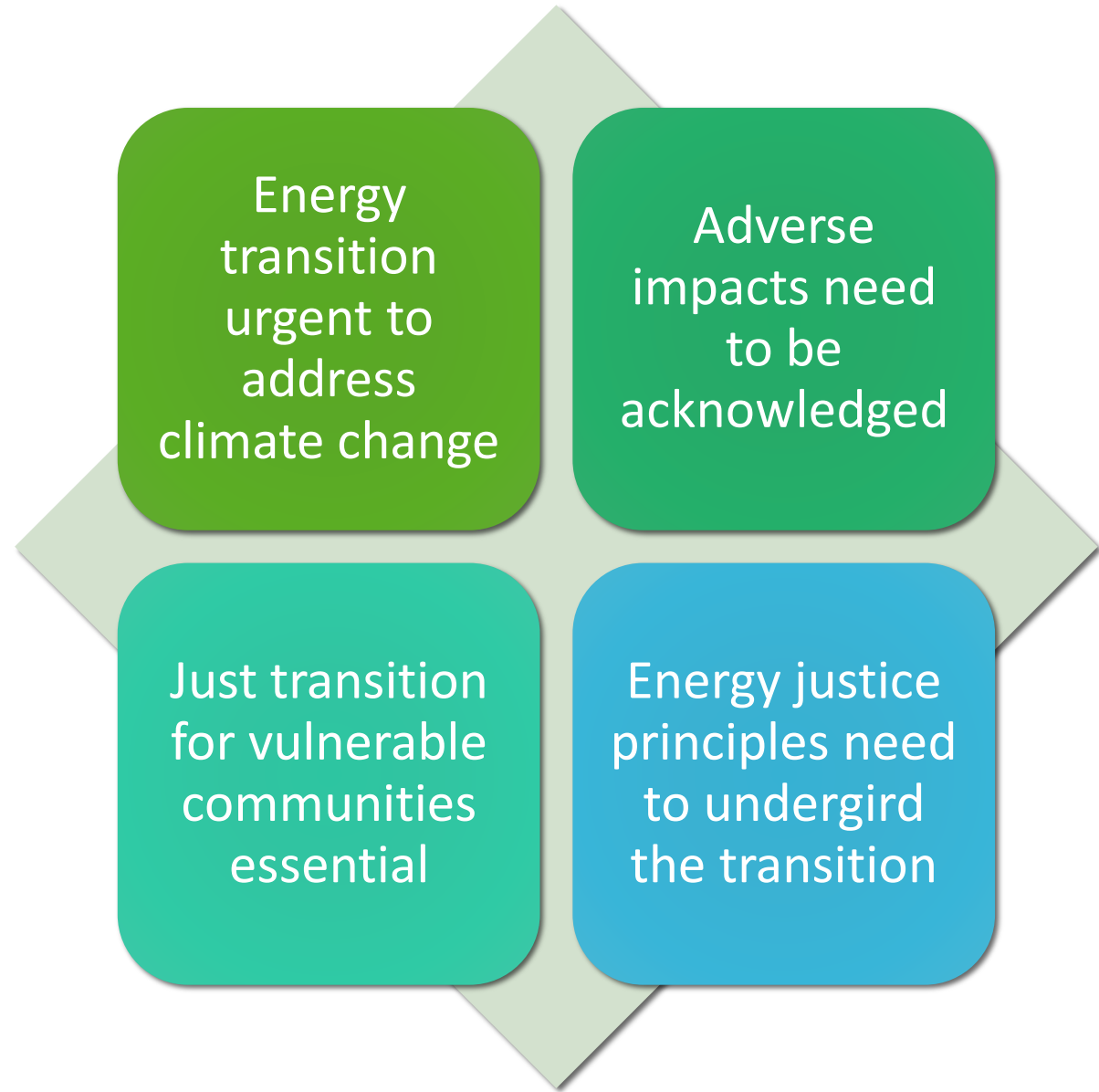


Indigenous peoples

- Historical neglect of indigenous peoples in energy development
- Cultural heritage destroyed for energy development
- Public engagement necessary to foster social inclusion
- Alternative energy sources should be provided where fossil fuels are main energy sources



Conclusion



Let's continue the conversation!

Post questions and comments in the IAIA24 app.



Etisang Abraham

Environmental Consultant/WRc Ltd (part of RSK)

United Kingdom

Etisang.Abraham@wrcgroup.com

<https://www.linkedin.com/in/etisang-abraham-454416152/>

www.wrcgroup.com



#iaia24