

Community engagement and benefit-sharing contributions to a just transition

Shared-Value towards SLO: engagement and growth approaching Communities



Session 202

Thursday 25 April - 16:00-17:30

Liffey Meeting Room 3

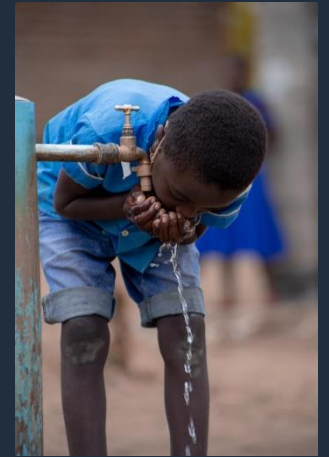
Participant: Margarida Pinto-Correia

[linkedin@MargaridaPintoCorreia](https://www.linkedin.com/in/MargaridaPintoCorreia)

EDP.COM@LocalStakeholderEngagement



From Kakuma with *LIGHT*



Energy Transition: Transforming Business attitude into a Just one

Only by addressing the three areas of IMPACT will the Transition really apply to everyone ensuring a Social License to Operate

Leaving No One Behind @Community Engagement

- **KNOWING the Community:** mapping, actively listening, debate, open continuous channels of communication
- **problem preventing** by **early identification** of crisis and risks in any territory.
- Bringing **shared value** into PEOPLE's daily lives

Reskilling and UpSkillling

- **@ DECOMMISSIONING,** preparing population for the period of change to come
- **@ REs Deployment,** prepare the Community to the new skills needed / new jobs to be created

Innovation

- Investing in **new Renewable Energies**
- **Fastening** the transition process
- Developing new **Grids and storage's solutions**

Access To Energy

- **NetZero** won't be reached without the Greater South // Underdeveloped Countries
- Bringing **CLEAN Energy** to areas with no access

Bringing Leadership to understand
that tripling renewables won't survive Community antagonism



The Social License to Operate (also) means allowing business to strive
with no further problems/ population upris



Managing the impact of clean power infrastructure on people and nature is increasingly important

Massive deployment of clean power is needed to reach net zero (3x by 2030 and 9x by 2050). It will require a lot of land and ocean, increasingly intersecting with communities and natural ecosystems.

It is critical to manage this impact to:



Accelerate the pace of the transition by reducing opposition, project delays and cancellations



Create broader system value for the economy, the society and the environment

Responsible deployment includes ensuring an equitable energy transition and implementing nature positive solutions which contribute to biodiversity conservation and restoration

Businesses support «Responsible» deployment but lack a common understanding and approach

CEO Support



Multistakeholder Community

- 26** Business experts
- 10** Academia
- 19** Non-profit and philanthropy

Define what "good" means

Create an industry-wide standard to assess, measure and monitor impact of clean power deployment on communities and natural ecosystems.



Guidance for governments to:

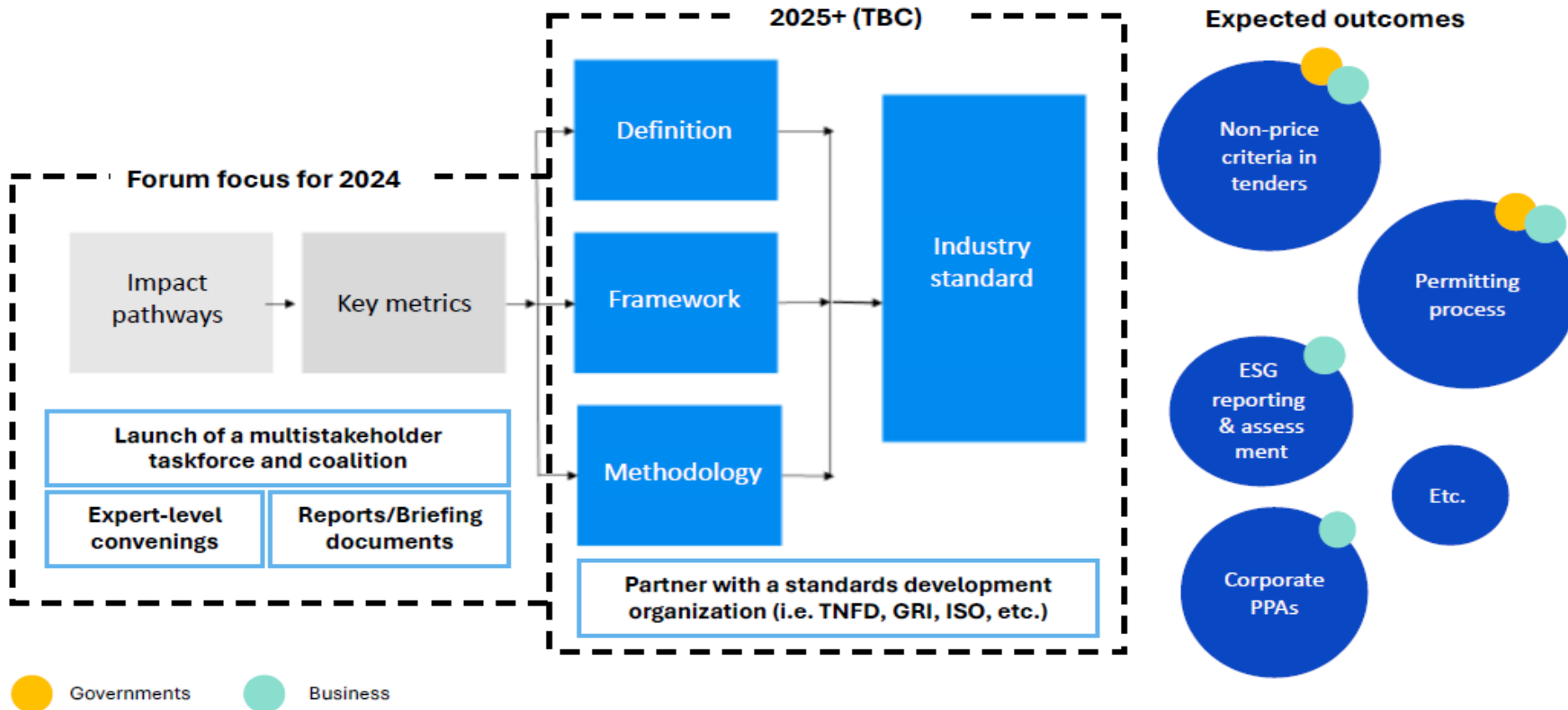
- Create and deploy better tenders and permitting processes



Metrics for business to:

- Baseline, measure and improve their own performance

The World Economic Forum is best positioned to respond to this need and create system change



Tripling Renewables requires a *Just Transformation*

What's in it for Business?

Main Challenges

- ❑ Corporate alignment: Align internally for the strategic purpose of Business. Share Lessons Learned. >>
- ❑ Avoid NIMBY/ BANANA: Communities are suspicious of RES and do not want to **host the unknown**.
- ❑ Contractors' alignment: get all those working on our facilities, to tune into Ethics and HR commitments (Procurement/ Supply Chain). The SCOPE3 challenge.



Power *With* the People

by Miguel Stilwell d'Andrade
@ WEF

Tripling Renewables requires a Just *Transformation* – not just Transitioning. Local Engagement has to be a priority.



Community Gatekeeper @EDP

Unified Approach through a

Policy for Local Stakeholder Engagement:

- Reinforces prevention, promoting **Social License to Operate**, establishing minimum requirements
- Provides local teams with specific guidelines and training on best practices
- Promotes monitoring and learning across the teams

Policy Scope

The commitment is now transversal to all teams at any phase of operation. Engagement starts EARLY

M&A > international regulation: environmental and human Rights DD (like the Corporate Sustainability Reporting Directive)

> broadening the opportunity to **prevent deeper crisis**, by **early identification of risks**, and further knowledge of the population affected by business;

- Engage with **all possible to-be affected populations**, making them part of the process and of the **shared value** planned with the new operation phase.

• Enforcement:

- ✓ **C-Level – aligning speech with practice:** Do we want to reduce **COSTS** resulting from non-engaged communities? **NIMBY** and **BANANA** situations
- ✓ **Development stage–** CSRD requires evidence of due diligence and knowledge: are there Social-Economic or Biodiversity impacts affecting population?
- ✓ **Local Teams – Procedures** applicable to all regions

Over 500 **voluntary** projects across the Globe

Measuring Impact through **B4SI**

has been aligning the **Social Investment** into Outcomes



Development of **Solar energy projects** to bring the benefits of solar to local communities either in individual self-consumption or solar communities



Development of projects to fight **Energy poverty** so that people with low income can maintain their homes in an adequate temperature (and prevent several cardiovascular diseases);



Development of **Upskilling and Reskilling** projects within the scope of renewable energy, to meet future labor needs and guarantee that former coal workers and other minorities have job opportunities



Promotion of **Educational programs** for the new generations to understand the importance of clean energy sources

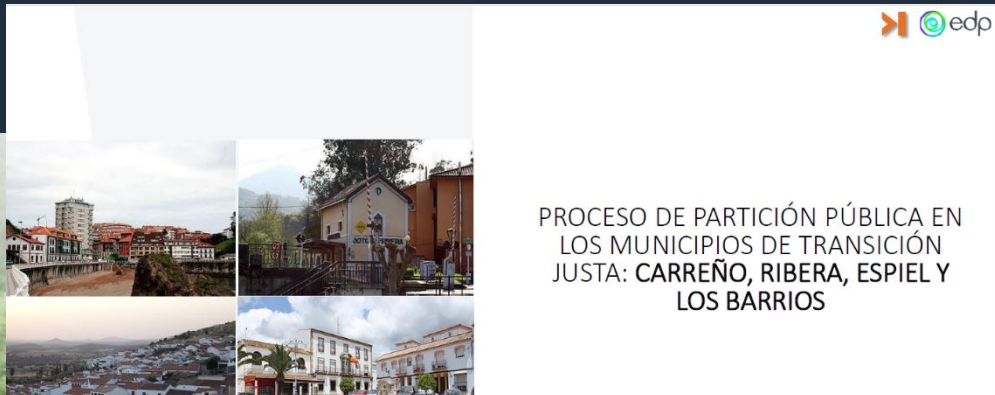


Launching an **Impact Investing Fund** to channel capital and expertise to the most promising solutions for the fair energy transition

What about **compulsory measures**? How do we define goals and criteria?

Making sense to others

Step 1, Due Dilligence/ Assessment: understand and map your community. Study. Listen.



PROCESO DE PARTICIÓN PÚBLICA EN LOS MUNICIPIOS DE TRANSICIÓN JUSTA: CARREÑO, RIBERA, ESPIEL Y LOS BARRIOS



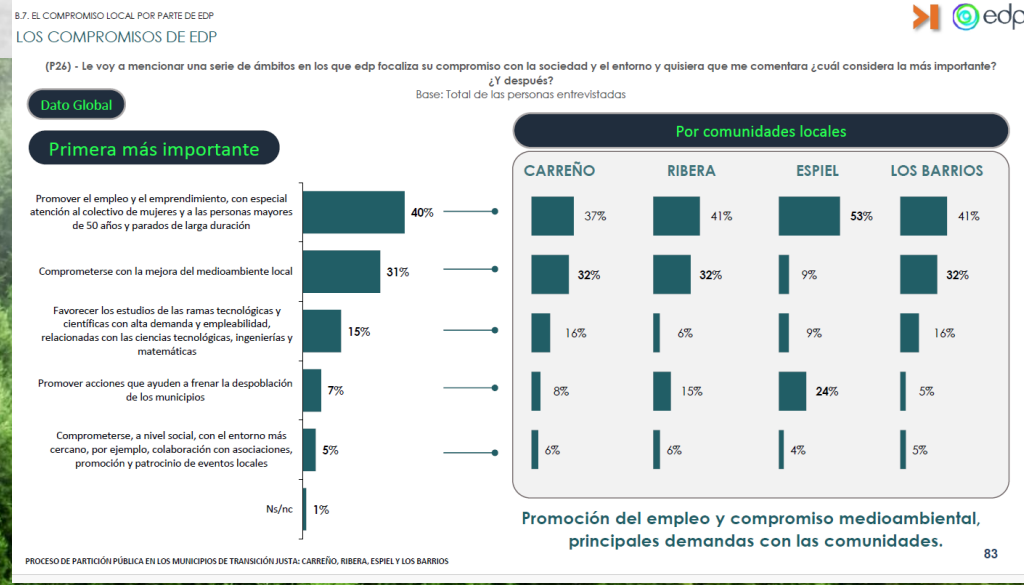
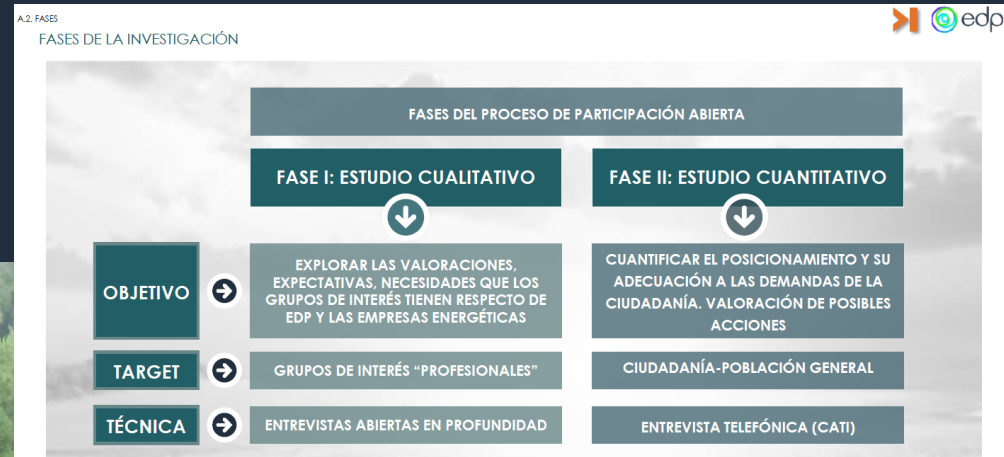
A.3. FASES
FASES DE LA INVESTIGACIÓN

INFORME DE RESULTADOS

B.1. LA CALIDAD DE VIDA EN EL MUNICIPIO
PRINCIPALES PREOCUPACIONES Y NECESIDADES EN EL MUNICIPIO

A PESAR DE ESTA ELEVADA CALIDAD DE VIDA ¿CUÁLES SON LOS PRINCIPALES PROBLEMAS?

- LA FALTA DE EMPLEO**
 - En todas las comunidades analizadas.
 - Principal motivo para desplazarse a otros lugares.
 - Especialmente de los más jóvenes, de las personas mayores y de las mujeres.
- LA DESPOBLACIÓN**
 - Las familias cada vez son más reducidas...
 - ... pero también la falta de oportunidades fuerza desplazamientos, especialmente de los más jóvenes.
- PERIODO DE TRANSICIÓN A...**
 - Nos encontramos ante un momento de incertidumbre (efectos del cambio climático, situación de embalses, dudas respecto al vehículo eléctrico...)
 - ... que genera **bastantes dudas** acerca del futuro cercano.
- EL MEDIOAMBIENTE**
 - La propia evolución hace que se generen dudas respecto al futuro del medioambiente y los recursos que genera.
 - Es una de las fortalezas de la vida en las comunidades y un factor estratégico en su desarrollo futuro.
- ... Y UN PROGRESIVO ABANDONO DE LO RURAL**
 - Estamos dejados de la mano de Dios, nos sentimos abandonados. En un entorno muy chulo, pero olvidados. Carreño
 - Está muy claro que todo lo rural es muy bonito, está muy bien, pero entre todos lo estamos dejando morir, estamos abandonando con ello. Espiel
 - Sensación de dejadez, de malas noticias, cada vez menos servicios, menos implicaciones, compromisos...



SINES 2020: 6 months to shut down the coal power plant

>> The *Futuro Activo Sines* Programme



[WEF's Coal to Renewables](#)

[AWARD Community Involvement Program 2022 in EMEA by Environmental Finance](#)



100% workers had an individualized plan including **reskilling/ upskilling**, retirement or internal mobility. **77%** new jobs.



Academic Study on the prospective local economy to further invest on education and oportunities



Social Investment Programme: dedicated entrepreneurship courses and investment; social-funding for NGO



Local office for social action: Municipality + State Employment and Training services + EDP: providing psychological, employment, training and social support for workers, their families and the local community.

Solidarity Solar: Flagship concepts across all EDP regions, contributing towards the global transition whilst addressing a local agenda



Projects

- Solar self-consumption
- Energy Community

● **Energia do Bairro** 🇵🇹
Cova da Moura, Lisboa
150 houses Completed

● **Energia do Bairro** 🇵🇹
2 neighborhoods, Porto
> 300 apartments 2024

● **Energia do Bairro** 🇵🇹
4 neighborhoods, Porto
230 houses

● **Microusinha Solar** 🇧🇷
Favela dos Sonhos, S.Paulo
200 houses - Q1 2024

Energia do Bairro 🇵🇹
342 apartments Amadora

● **Transição 3ºsector** 🇪🇸
Solar in social institutions

● **Revolusolar** 🇧🇷
Jabaeté, Espírito Santo
2 Institutions
Q1 2024

● **Transição 3ºsector** 🇵🇹
IPSS EDPC Portugal
YE 2023

■ Territories where EDP has solar DG projects or installations

In Spain, three power plants are being decommissioned – and their communities have been part of the roadmap



ENTAMA entrepreneurship and new jobs creation



Tech Camps (7-15 year old) technical local education for REs opportunities



EDP Partners engaging local suppliers and Academia



EDP + Cerca improving in local housing and public services

In Brasil –lack of future is the biggest challenge

EDP IMPULSA diagnoses communities in cooperation with local authorities, further promoting professional development

Favela dos Sonhos – a social deprived neighborhood profiting from the nearby solar plant.

- Energy at 60% lower cost
- Local NGO engaged on criteria
- Fighting Energy Poverty
- Educating for the Energy Transition

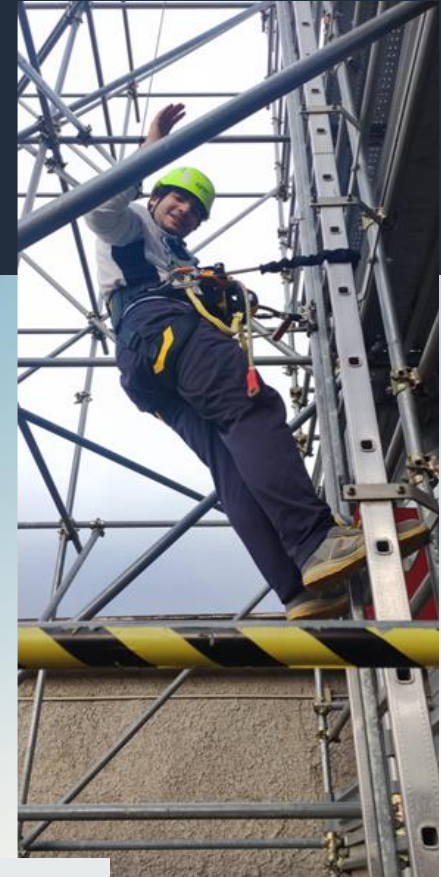


EDP Renewables developed programmes for various countries, sharing best practice

- KEEP IT LOCAL promotes REs and New Jobs through education:

young people within rural areas are challenged to explore their talents on Renewable ideas :

- Italy, Spain and Brasil
- 264 students
- 47% students employed



- Closer2You –rebuilds deprived areas
- EDP Rural – empowering farming communities, taking new agricultural knowledge and tools

EDPR NA: proud to have a significant impact in our communities



Have paid **\$15 billion** to local landowners.



Produce energy equivalent to the average consumption of **more than 2,5 million** U.S. homes.



Save more than **16.4 billion** gallons of water every year.



Have created more than **600 permanent jobs** and **7,000 construction jobs**



CRC – Community Relations Coordinator:

2023

3 running (Indiana, Michigan, illianois)
1 in progress (California)

2024

8 to-be-contracted

EDPR APAC (Asia Pacific) invested in a non-business related Island building evidence and trust for solar DG : building a sustainable future

Pulau Ubin

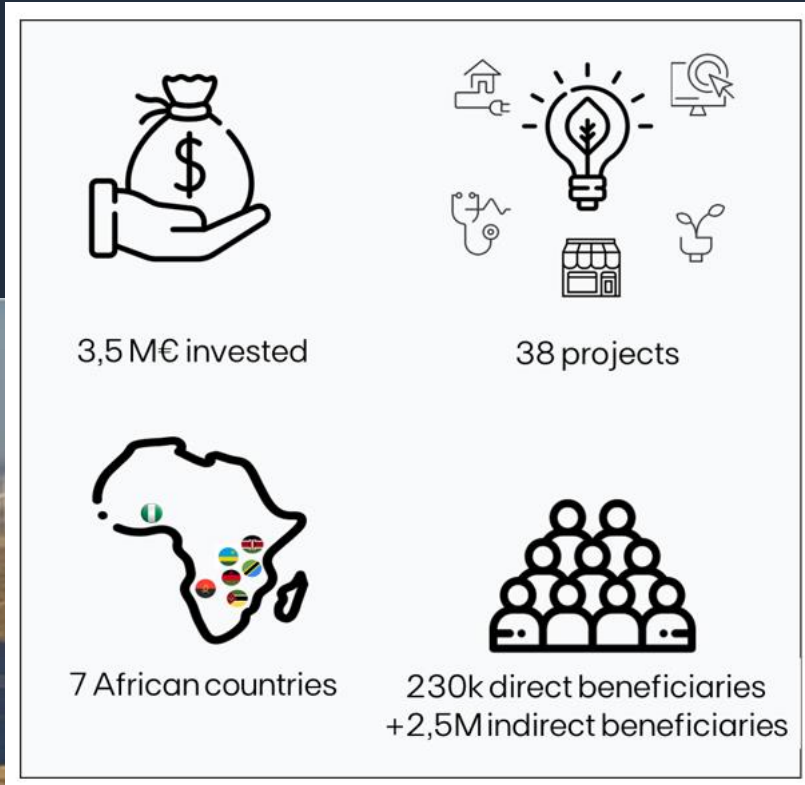
- Small island NE of Singapore, a short boat ride away from the city
- Until '23 it was solely powered by mobile diesel generators!
- Each 1L of diesel burned releases over 2,6 Kg of CO₂ into the atmosphere

Energy Market Authority + EDPR:

- Forefront of a Renewable Energy Revolution
- MICRI GRID with greenery on rooftops
- Sustainable, Reliable and affordable



Back to A2E – the impact of a vision



For the last decade, the EDP Group invested ~16,5 M€ in Access to Energy, benefiting more than 400.000 people directly and 3 million indirectly



WE CHOOSE PEOPLE

and together, we make it better!

Let's continue the conversation!

Post questions and comments in the IAIA24 app.



#iaia24

Margarida Pinto-Correia

Community Engagement Lead @ EDP Policy, Regulation & Stakeholders Global Unit

Portugal (Global)

Margarida.pintocorreia@edp.com

[linkedin@MargaridaPintoCorreia](#)

[EDP.COM @LocalStakeholderEngagement](#)