

The role of social impact assessment in shaping community benefit schemes



Andrea Kanaris

*Director, All Things Social Impact
Australia*

info@allthingsocialimpact.com

[Andrea Kanaris | LinkedIn](#)



The Dilemma

“Never the Twain Shall Meet”

what are other
words for
unrelated?



unconnected, separate,
irrelevant, extraneous,
inapplicable, isolated,
distinct, unassociated



The Dilemma continues

“The road to hell is paved with good intentions”



← Cane toads were introduced to Australia in 1935 with the intention to control agricultural pests

They proved ineffective in this role, but adapted well to the Australian environment and became a problem →



Good intentions



Good outcome



Gap between impacts and funding

Case Studies



TRANSFORMING POWER DEVELOPMENT PLANNING IN THE GREATER MEKONG SUBREGION
A STRATEGIC AND INTEGRATED APPROACH
DECEMBER 2020



ENHANCING POSITIVE SOCIAL OUTCOMES FROM WIND FARM DEVELOPMENT
Evaluating community engagement and benefit-sharing in Australia

APPENDIX A

Enhancing Positive Social Outcomes from Wind Development in Australia: Evaluating Community Engagement & Benefit-sharing

WIND INDUSTRY COMMUNITY ENGAGEMENT & BENEFIT-SHARING SURVEY RESULTS

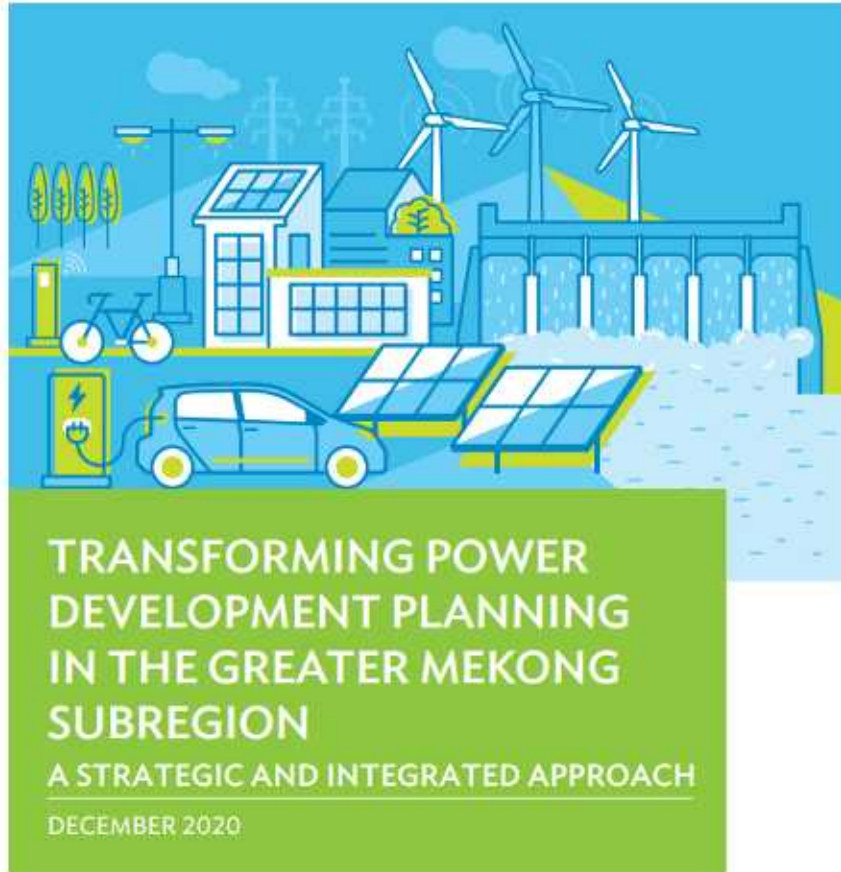
March 2017

Joira Hicks, Emily Wood, Taryn Lane, Alicia Webb and Franziska Mley

ASIA CASE STUDY – Success Factors

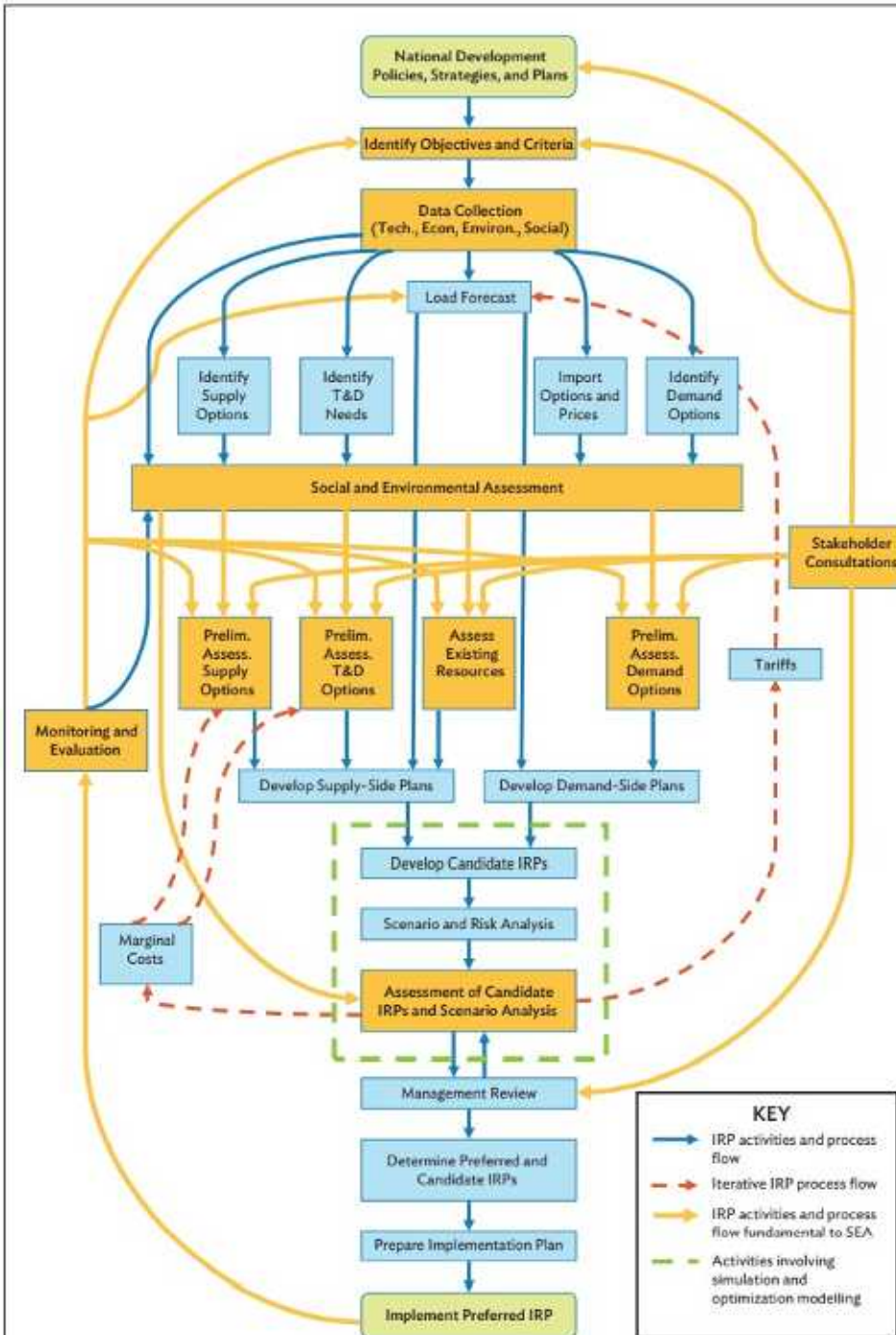
Community Benefit Funds:

- *Be consistent with the objective and criteria identified through baseline study of the regional and national development policies, strategies and plans.*
- *Be consistent with the identified environmental and social impacts.*
- *Develop mitigation measures proportionate to the identified impacts.*



ASIA CASE STUDY – Limitations

- *It neglected the fact that SIA is usually done by independent experts outside of the project proponents, whilst community development programs are usually designed and implemented by the project proponents themselves.*
- *How much responsibility should the corporate take in addressing impacts compared to the society, government, NGOs etc.?*
- *Will experts of the right skill sets be involved in the whole process to guarantee capacity and reliability of analysis?*



Australia Case Study – Findings



- *A range of approaches to community engagement are currently being used across the Australian wind industry.*
- *Benefit-sharing is currently less common, less diverse and less understood*
- *Respondents understand the primary purpose of community engagement is to build relationships (26%), followed by a need to inform and educate (17%).*
- *Respondents were wary of public meetings (e.g. ‘town hall’ meetings) and use of surveys, feeling that these can easily misrepresent local sentiments (i.e. be hijacked) and can tend to result in creating ‘for and against’ divides.*
- *For those that do benefit-sharing, the most common forms are sponsorship (25%) and community grant funds (34%)*
- *17% of respondents are also using (or plan to implement) community co-investment or co-ownership.*

Australia Case Study – Learnings



- *There is a lack of qualified and skilled community development and/or social impact practitioners in the wind farm industry.*
- *There is no consideration of impacts, social or environmental, in the development of benefit-sharing schemes.*
- *Over reliance on stakeholder or community engagement activities to provide community benefit.*
- *No clear measures for determining the degree of success of their community engagement and benefit-sharing activities.*
- *Information provision focused.*
- *Lack of transparency.*

Why Link CBF to SIA?

- SIA identify opportunities for community benefit schemes based on the characteristics and needs of the community (Maria Esteves & Vanclay, 2009).
- SIA provides the case for who is eligible to receive community benefit schemes (Devine-Wright & Sherry-Brennan, 2019).
- SIA establishes the effectiveness of initiatives with robust evaluation methods (Barnett, Henriques, & Husted, 2020).
- SIA helps to facilitate selection and design of community benefit schemes that can realize their good intentions (Barnett, Henriques, & Husted, 2020).
- SIA provides the evidence base, using rigorous research methods, to help select effective and efficient design of community benefit schemes (Barnett, Henriques, & Husted, 2020).
- SIA helps justify the design of community benefit schemes (Barnett, Henriques, & Husted, 2020).
- SIA provides the data required for ongoing monitoring and measurement.



Reimagining Community Benefit Funds



Company
CSR | ESG | Sustainability



Let's continue the conversation!

Post questions and comments in the IAIA24 app.



#iaia24

Andrea Kanaris

*Principal Social Assessment and Performance – Australia and Asia
Australia*

Andrea.Kanaris@hatch.com

[Andrea Kanaris | LinkedIn](#)

www.hatch.com